

Waveguide Ortho-Mode Transducer(OMT) 140-220GHz 1.29mm(0.051inch) Square Waveguide Common Port

Waveguide Ortho-Mode Transducer

RM-WOMT5

Description

The RM-WOMT5 is a 140-220 GHz waveguide ortho-mode Transducer used to separate a signal at a common port into two linear orthogonal components located at the ports of a rectangular waveguide. It is widely used in high-end scientific research, satellite communications, radio astronomy, and radar systems.

Specifications

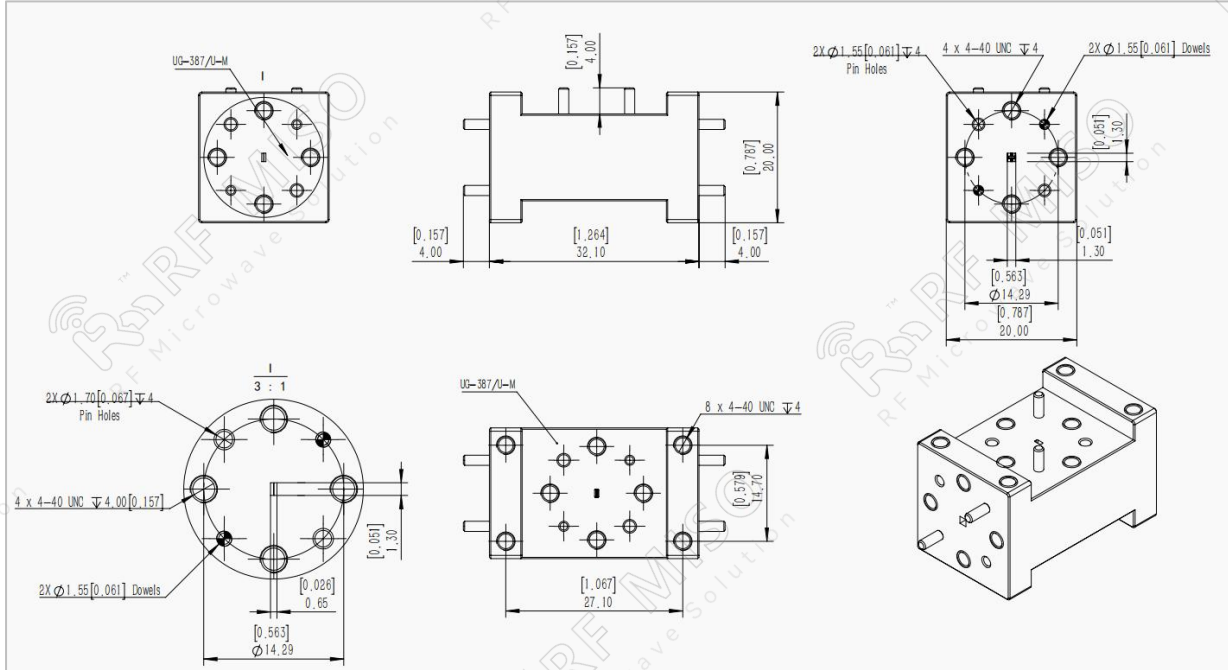
Parameters	Specification	Unit
Frequency Range	140-220	GHz
VSWR	1.2 Typ.	
Insertion Loss	1.5 Max	dB
Port to Port Isolation	35 Typ.	dB
Port to Port Isolation	25 min.	dB
Size	32.1*20*20	mm
Weight	0.081	Kg
Material, Finish	Cu, Gold Plated	
Power Handling,CW	9	W
Waveguide Type,Port 1	Rectangular	
Waveguide Size,Port 1	WR5	
Waveguide Type,Port 2	Rectangular	
Waveguide Size, Port 2	WR5	
Waveguide Type,Common Port	Square	
Common Port WG Size	1.29(0.051)	mm(inch)
Common Port Flange	UG-387/U-M	
Operating Temperature	-55~85°C	

Waveguide Ortho-Mode Transducer(OMT) 140-220GHz
1.29mm(0.051inch) Square Waveguide Common Port

Waveguide Ortho-Mode Transducer

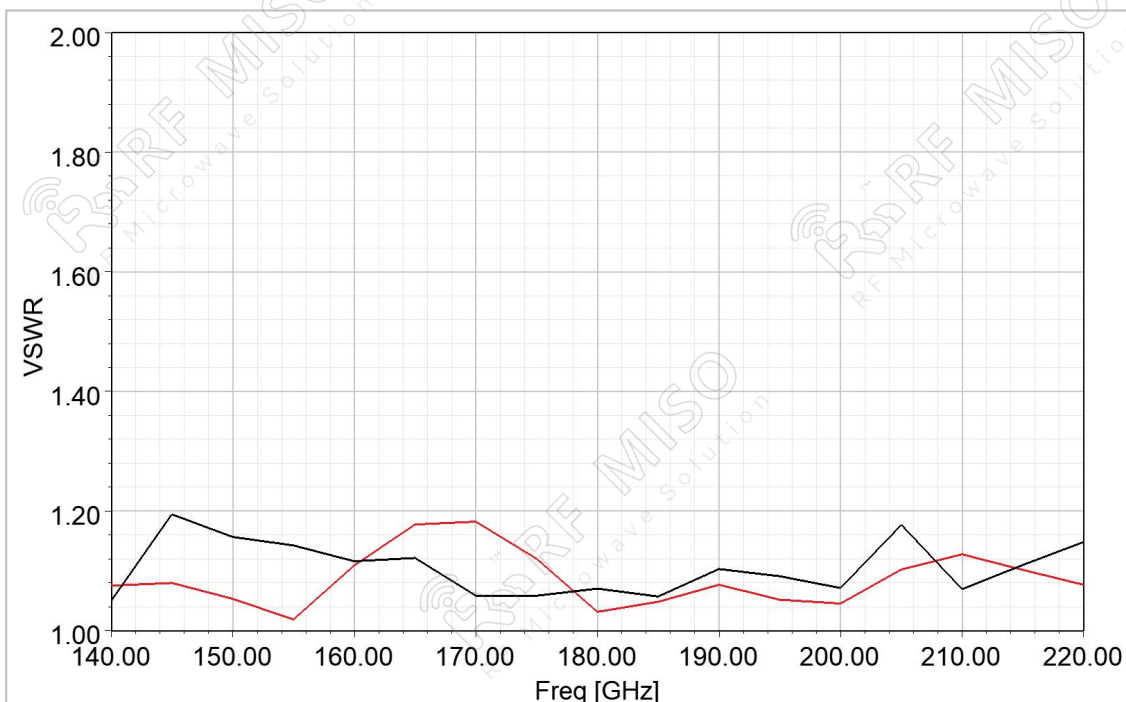
RM-WOMT5

Outline Drawing



Simulated Results

VSWR



Waveguide Ortho-Mode Transducer(OMT) 140-220GHz
1.29mm(0.051inch) Square Waveguide Common Port

Waveguide Ortho-Mode Transducer

RM-WOMT5

Port-to-Port Isolation

