

## Waveguide to Coaxial Adapter Date Sheet

## RM-WCA112

### Features

- Full Waveguide Band Performance
- Low Insertion Loss and VSWR
- Test Lab
- Instrumentation

### Descriptions

The **RM-WCA112** are right angle (90°) waveguide to coaxial adapters that operate the frequency range of 7.05-10GHz. They are designed and manufactured for instrumentation grade quality but offered at a commercial grade price, allowing for an efficient transition between the rectangular waveguide and SMA-Female coaxial connector.

### Specifications

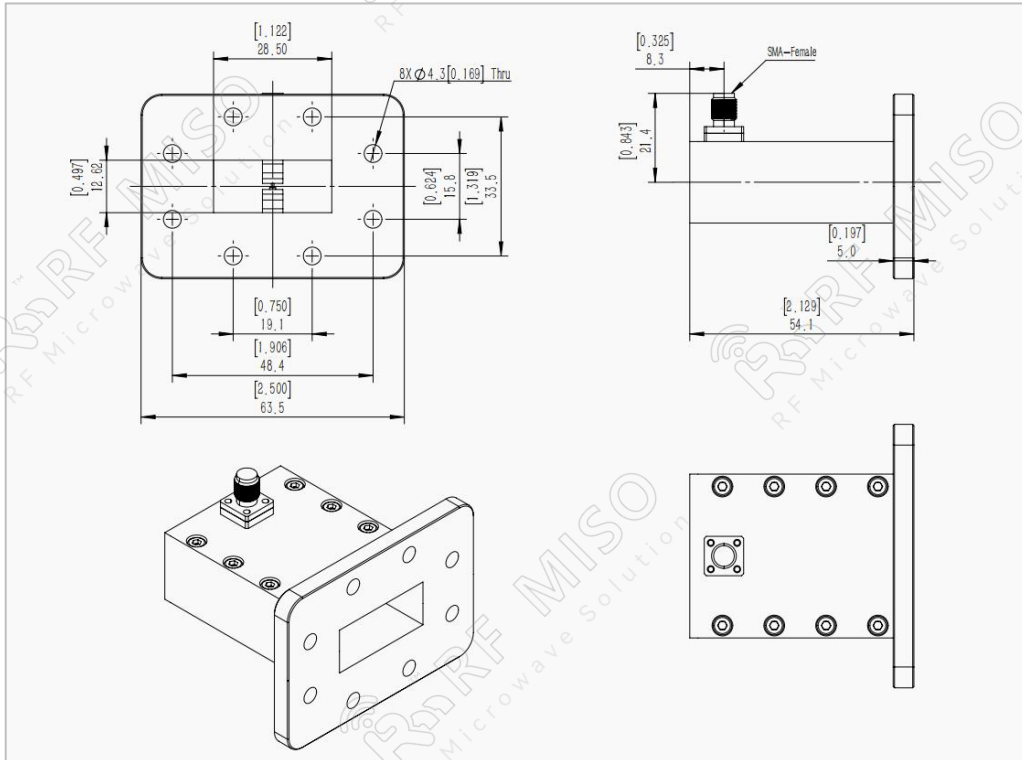
RM-WCA112		
Item	Specification	Units
Frequency Range	7.05-10	GHz
Waveguide	WR112	dBi
VSWR	1.3 Max	
Insertion Loss	0.35 Max	dB
Flange	CPRF	
Connector	SMA-Female	
Average Power	50Max	W
Peak Power	3	kW
Material	Al	
Size	34.1*47.8*47.8	mm
Net Weight	0.068	Kg

Waveguide to Coaxial Adapter  
7.05-10GHz Frequency Range

## Waveguide to Coaxial Adapter Date Sheet

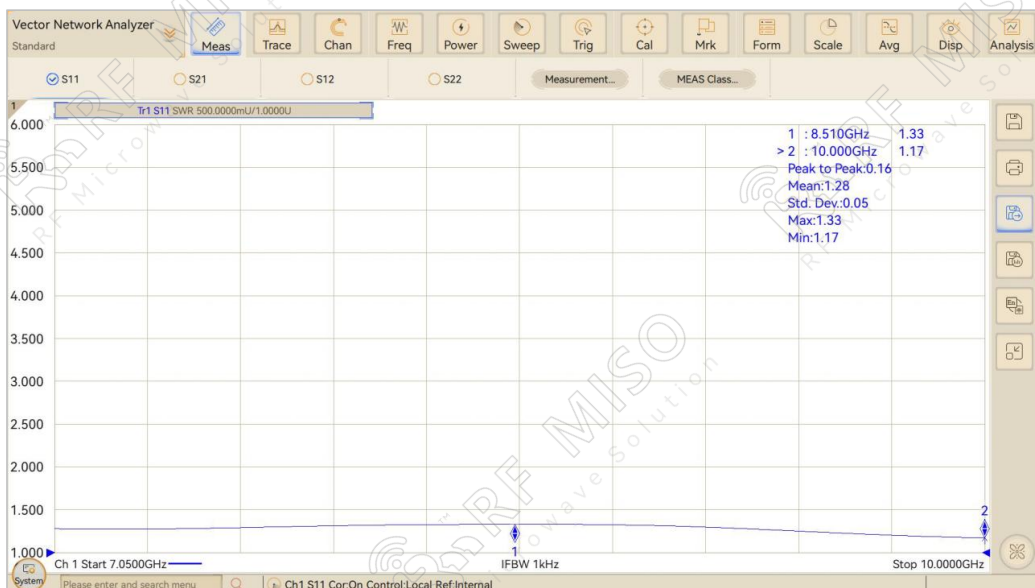
**RM-WCA112**

### Outline Drawing



### Test Data

#### VSWR

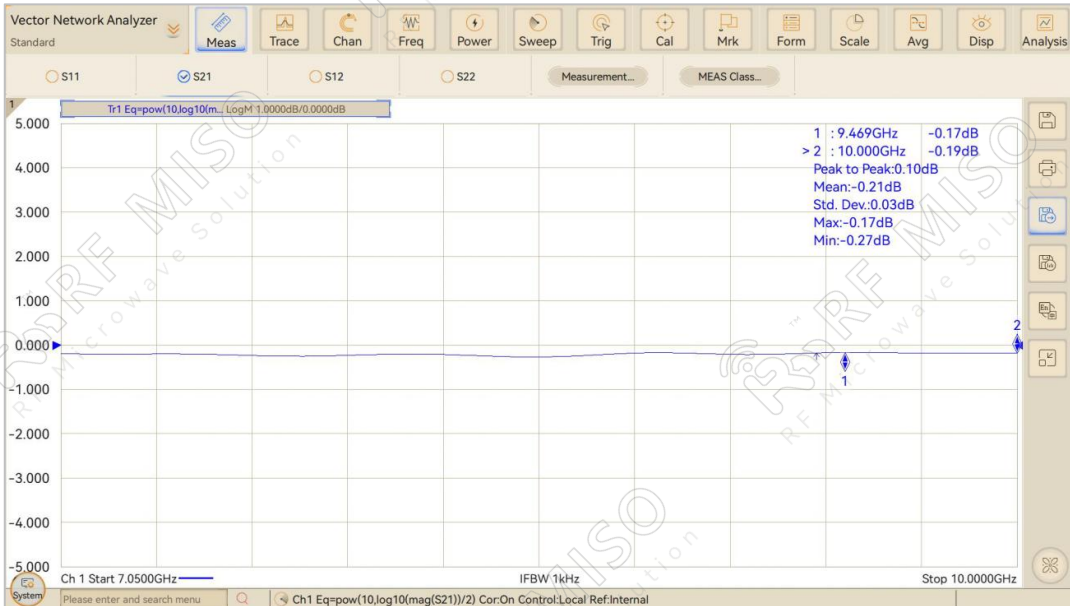


Waveguide to Coaxial Adapter  
7.05-10GHz Frequency Range

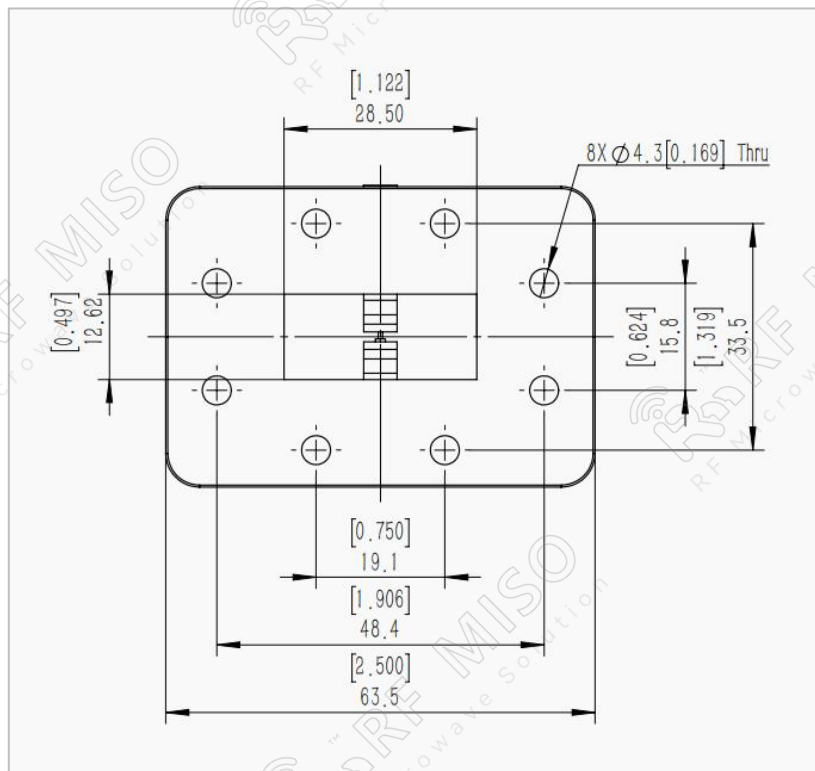
## Waveguide to Coaxial Adapter Date Sheet

**RM-WCA112**

### Insertion Loss



### Flange Outline Drawing



CPRF