

*Dual Polarized Horn Antenna
25dBi Typ.Gain, 110GHz-170GHz Frequency Range*

Dual Polarized Horn Antenna Data Sheet

RM-DPHA6-25

Features

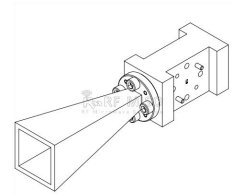
- Full Band Performance
- Dual Polarization
- High Isolation
- Precisely Machined and Gold Plated

Description

The **RM-DPHA6-25** is a full-band, dual-polarized, WR-6 horn antenna assembly that operates in the frequency range of 110 to 170 GHz. The antenna features an integrated orthogonal mode converter that provides high port isolation. The RM-DPHA6-25 supports vertical and horizontal waveguide orientations , a typical 3db beamwidth of 7.0 degrees in the E-plane, a typical 3db beamwidth of 9.05 degrees in the H-plane.

Specifications

RM-DPHA6-25		
Item	Specification	Units
Frequency Range	110-170	GHz
Gain	25 Typ.	dBi
VSWR	<1.5	
Polarization	Dual	
3dB Beam width E plane	7.0 Typ.	Degrees
3dB Beam width H plane	9.05 Typ.	Degrees
Port Isolation	45 Typ.	dB
Waveguide Size	WR-6	
Size(L*W*H)	91.9*20.9*20.9(±5)	mm
Weight	0.043	Kg
Body Material and Finish	Cu, Gold	

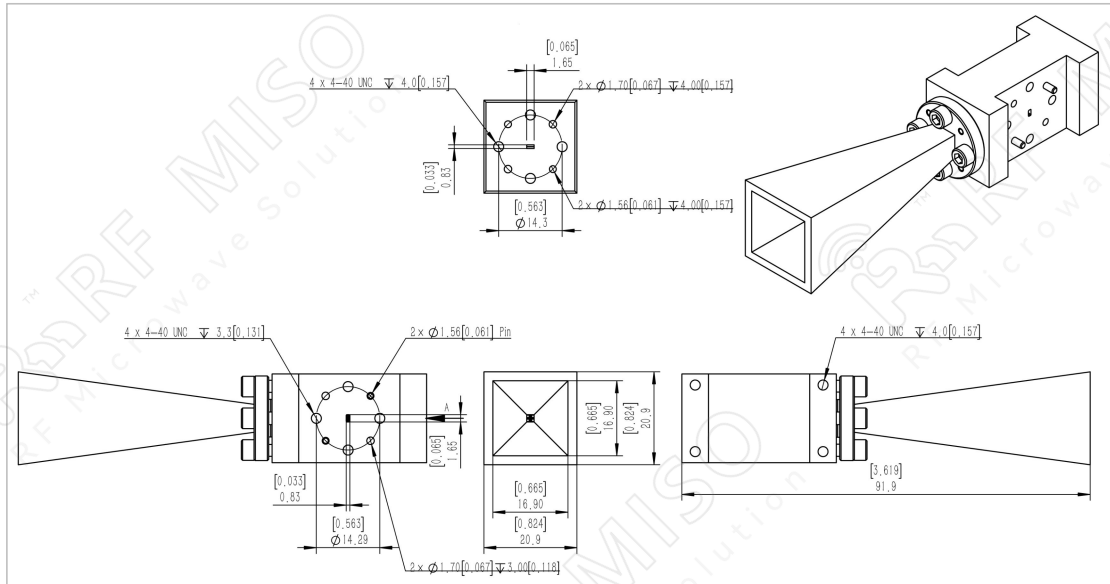


Dual Polarized Horn Antenna
25dBi Typ. Gain, 110GHz-170GHz Frequency Range

Dual Polarized Horn Antenna Data Sheet

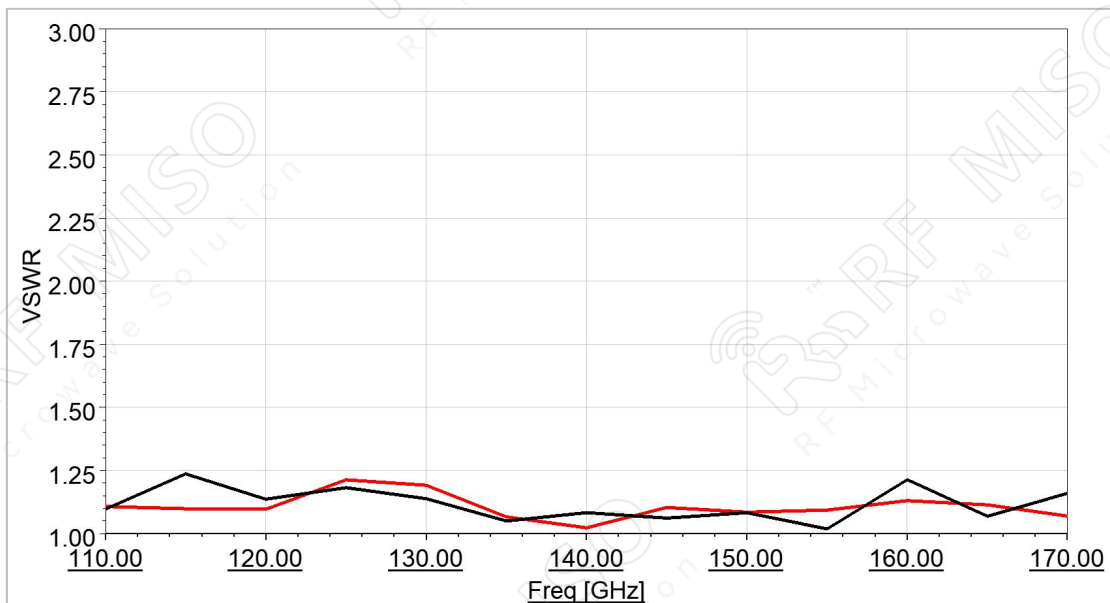
RM-DPHA6-25

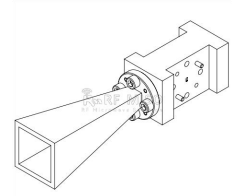
Outline Drawing



Simulated Data

VSWR



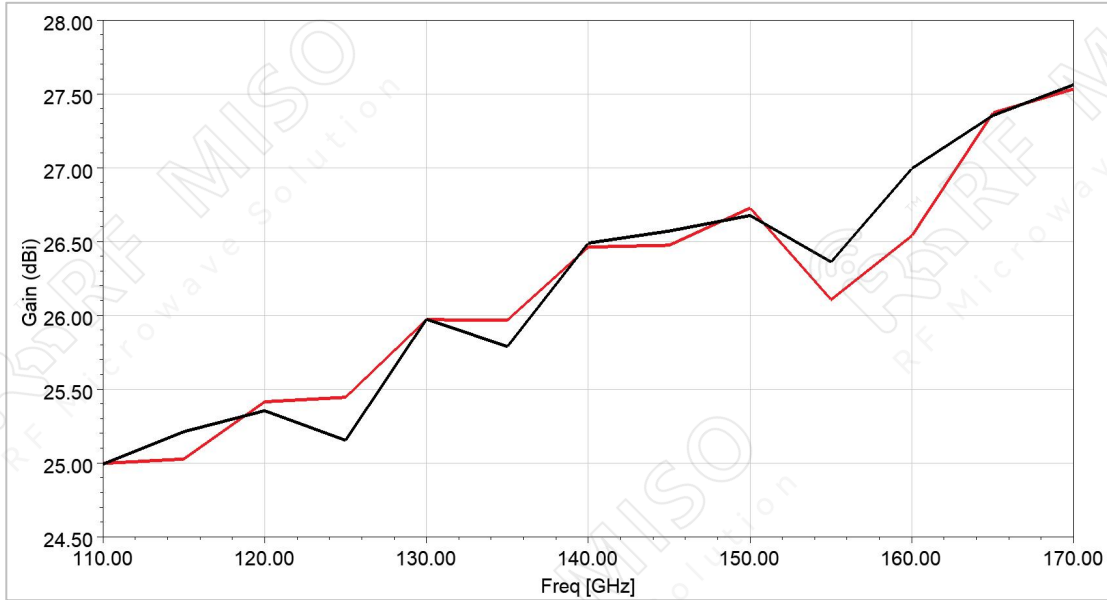


Dual Polarized Horn Antenna
25dBi Typ. Gain, 110GHz-170GHz Frequency Range

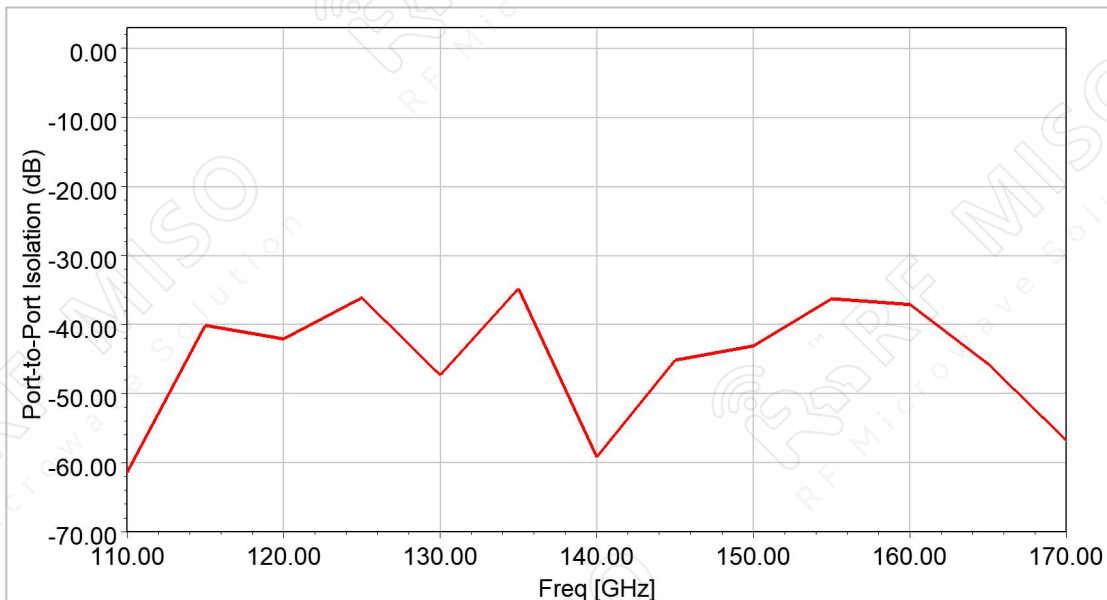
Dual Polarized Horn Antenna Data Sheet

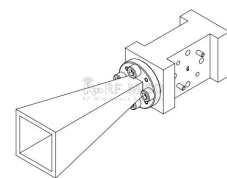
RM-DPHA6-25

Gain



Port to Port Isolation





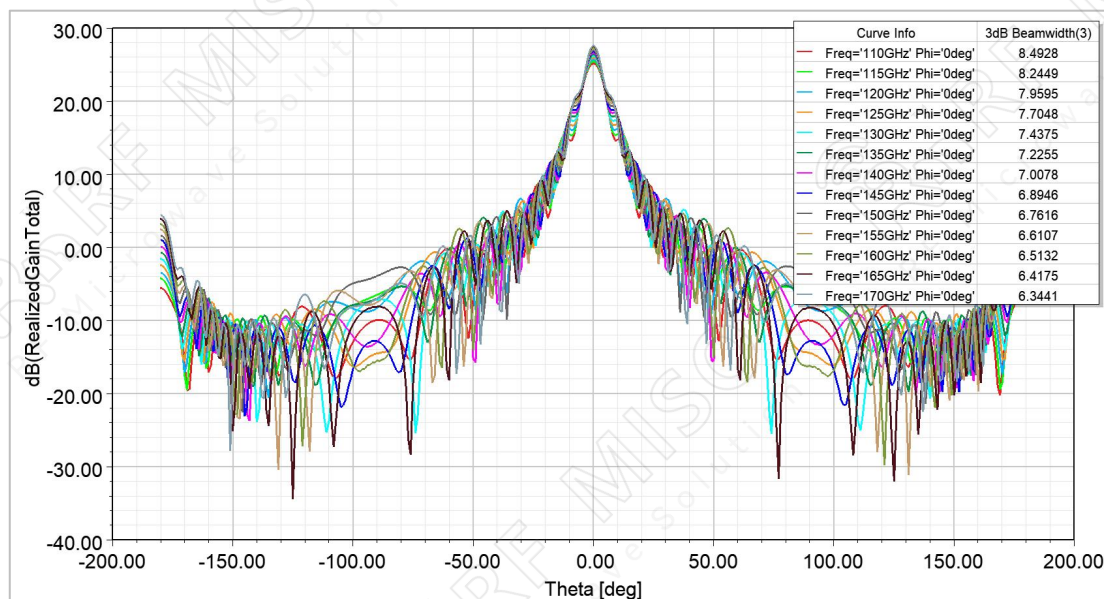
Dual Polarized Horn Antenna
25dBi Typ. Gain, 110GHz-170GHz Frequency Range

Dual Polarized Horn Antenna Data Sheet

RM-DPHA6-25

Pattern

E-Plane



H-Plane

