

*Dual Polarized Horn Antenna
25dBi Typ.Gain, 75-110GHz Frequency Range*

Dual Polarized Horn Antenna Data Sheet

RM-DPHA10-25

Features

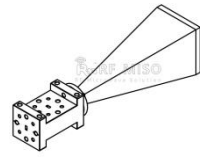
- Full Band Performance
- Dual Polarization
- High Isolation
- Precisely Machined and Gold Plated

Description

The **RM-DPHA10-25** is a full-band, dual-polarized, WR-10 horn antenna assembly that operates in the frequency range of 75 to 110GHz. The antenna features an integrated orthogonal mode converter that provides high port isolation. The RM-DPHA10-25 supports vertical and horizontal waveguide orientations and has a typical 50 dB cross-polarization isolation. The input to the antenna is a WR10 waveguide.

Specifications

RM-DPHA10-25		
Item	Specification	Units
Frequency Range	75-110	GHz
Gain	25 Typ.	dBi
VSWR	<1.3	
Polarization	Dual	
3dB Beam width E plane	7.30 Typ.	Degrees
3dB Beam width H plane	8.13 Typ.	Degrees
Cross Polarization	50 Typ.	dB
Waveguide Size	WR-10	
Size	115.46*29.05*29.05	mm
Weight	0.159	Kg
Body Material and Finish	Cu, Gold	

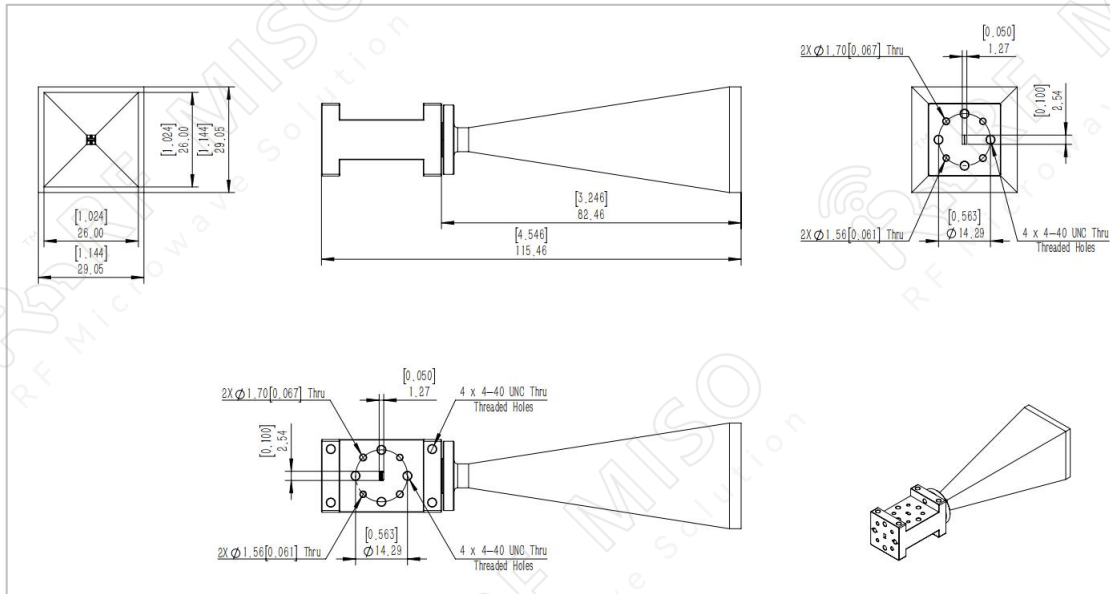


Dual Polarized Horn Antenna
25dBi Typ.Gain, 75-110GHz Frequency Range

Dual Polarized Horn Antenna Data Sheet

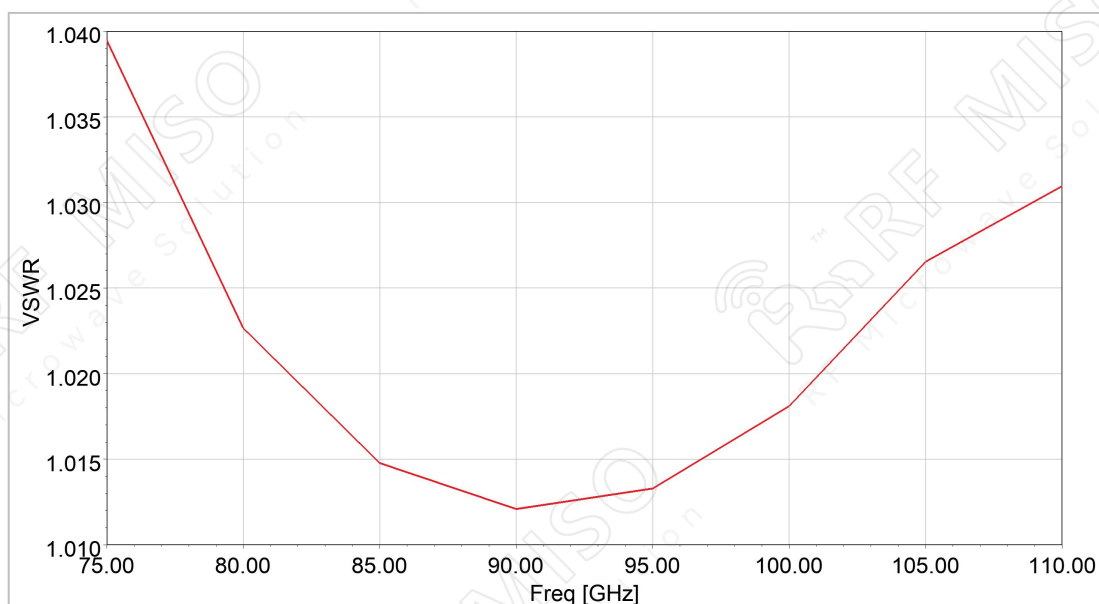
RM-DPHA10-25

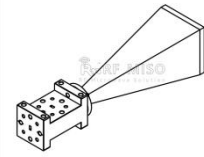
Outline Drawing



Simulation Result

VSWR



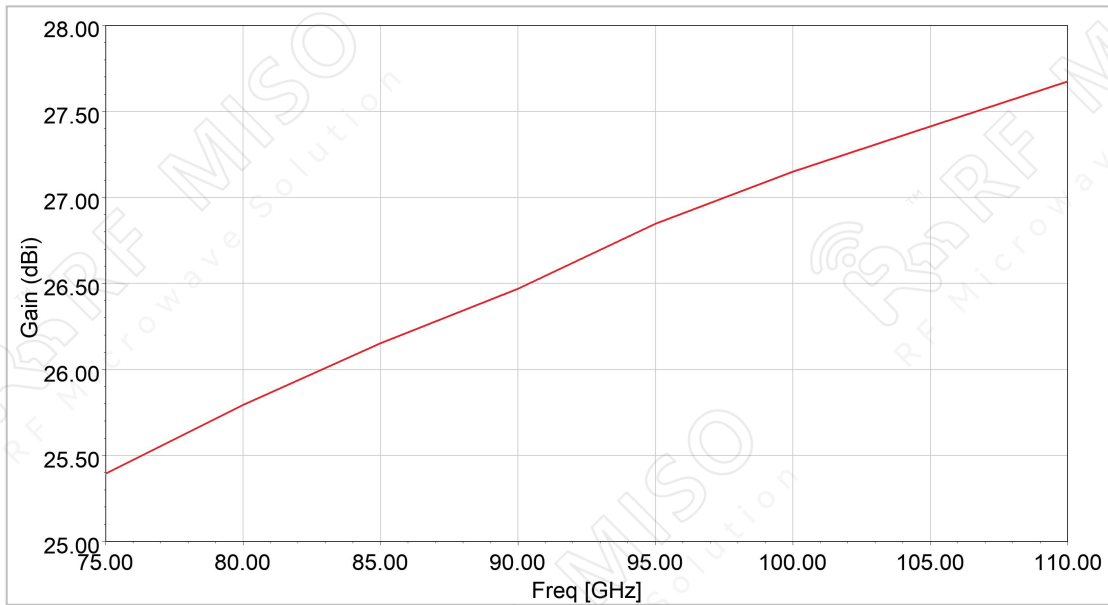


Dual Polarized Horn Antenna
25dBi Typ.Gain, 75-110GHz Frequency Range

Dual Polarized Horn Antenna Data Sheet

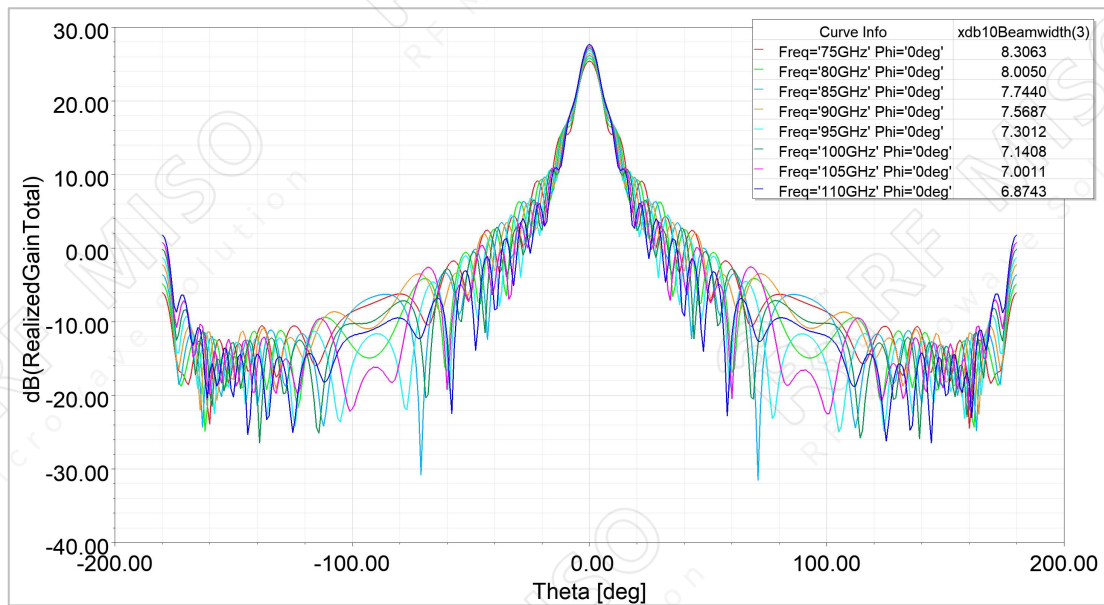
RM-DPHA10-25

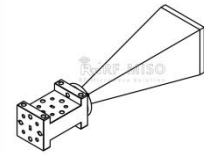
Gain



Pattern

E-Plane





Dual Polarized Horn Antenna
25dBi Typ.Gain, 75-110GHz Frequency Range

Dual Polarized Horn Antenna Data Sheet

RM-DPHA10-25

H-Plane

