

Dual Circular Polarized Horn Antenna
15 dBi Typ. Gain, 2-6GHz Frequency Range

Dual Circular Polarized Horn Antenna

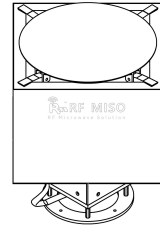
RM-DCPHA26-15

Description

RF MISO's Model RM-DCPHA26-15 is a dual circular polarized horn antenna that operates from 2 to 6GHz. The antenna offers a typical gain of 15 dBi and low VSWR <2. The interface is N-F. It can be widely used in satellite communications, radar, wireless links, test and measurement, etc.

Specifications

RM-DCPHA26-15		
Item	Specification	Units
Frequency Range	2-6	GHz
Gain	15 Typ.	dBi
AR	<2	dB
VSWR	<2	
Cross Polarization	33 Typ.	dB
Polarization	Dual Circular Polarized	
Connector	N-Female	
Finishing	Paint	
Material	Al	dB
Size(L*W*H)	244.9*244.9*344.0(±5)	mm
Weight	6.618	kg

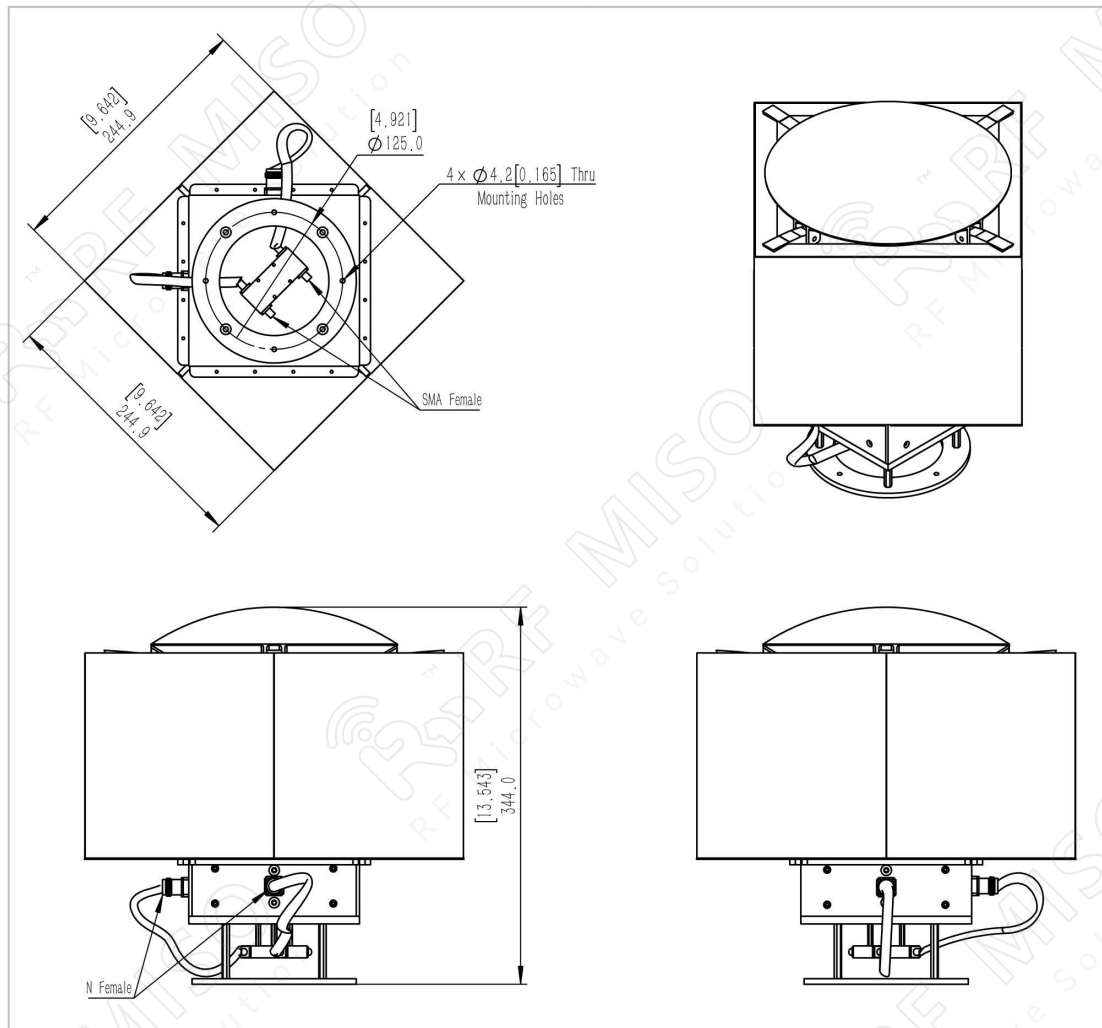


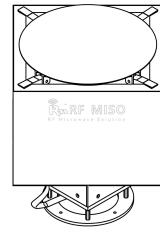
Dual Circular Polarized Horn Antenna
15 dBi Typ. Gain, 2-6GHz Frequency Range

Dual Circular Polarized Horn Antenna

RM-DCPHA26-15

Outline Drawing





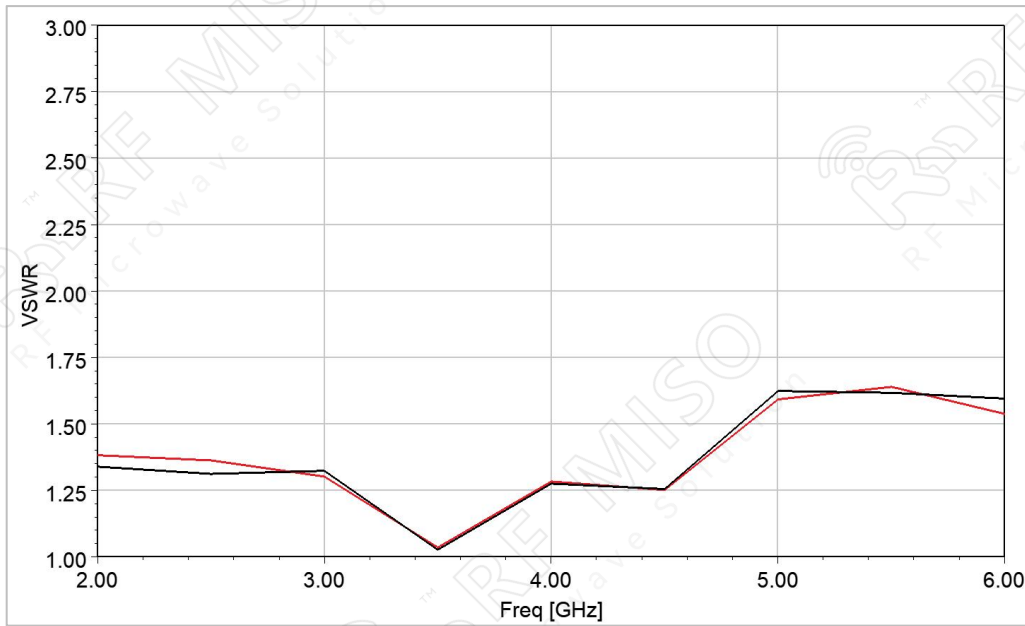
Dual Circular Polarized Horn Antenna
15 dBi Typ. Gain, 2-6GHz Frequency Range

Dual Circular Polarized Horn Antenna

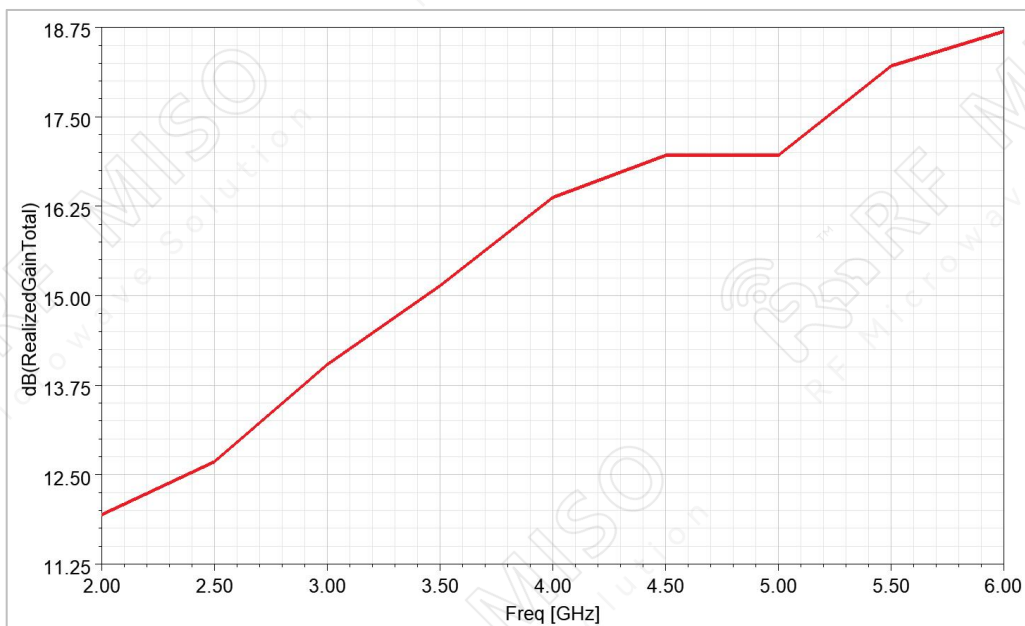
RM-DCPHA26-15

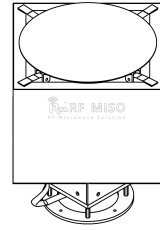
Simulation Data

VSWR



Gain



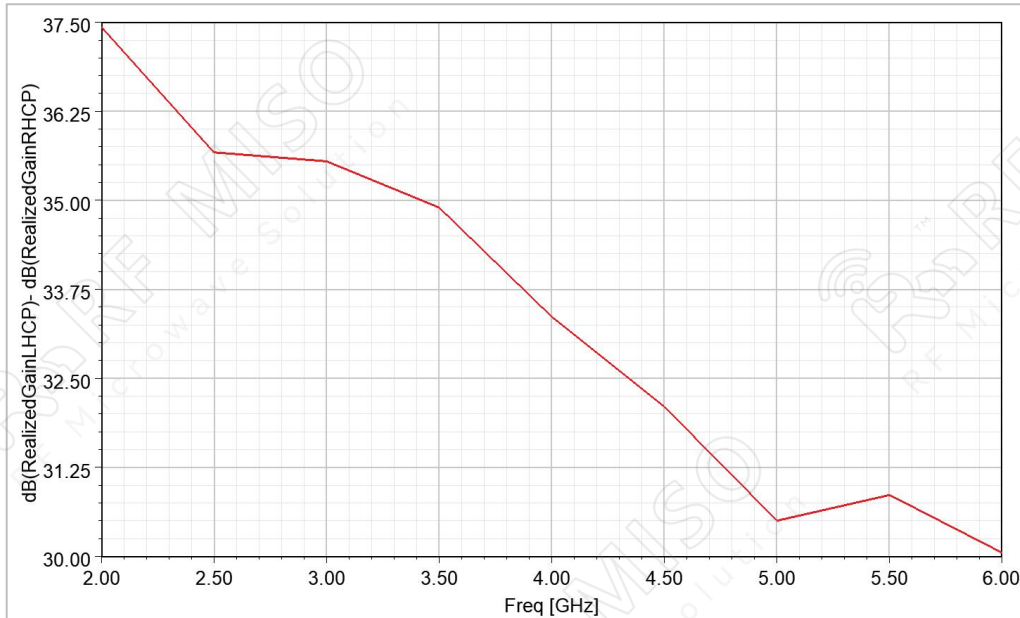


Dual Circular Polarized Horn Antenna
15 dBi Typ. Gain, 2-6GHz Frequency Range

Dual Circular Polarized Horn Antenna

RM-DCPHA26-15

Cross Polarization



Pattern

