

*Dual Circular Polarization Corrugated Horn Antenna
 9dBi Typ. Gain, 10.3-15GHz Frequency Range*

Corrugated Horn Antenna Data Sheet

RM-DCGHA75-9

Description

RF MISO's **Model RM-DCGHA75-9** is a dual circular-Polarization corrugated horn antenna that operates from 10.3 to 15 GHz. The antenna offers a typical gain of 9 dBi and low VSWR 1.5 Typ. with SMA Female output connector. This horn antenna features uniform gain and low cross-polarization isolation, making it ideal for antenna far-field testing, reflector feed applications, compact antenna test ranges (CATR), radar cross-section (RCS) measurements.

Specifications

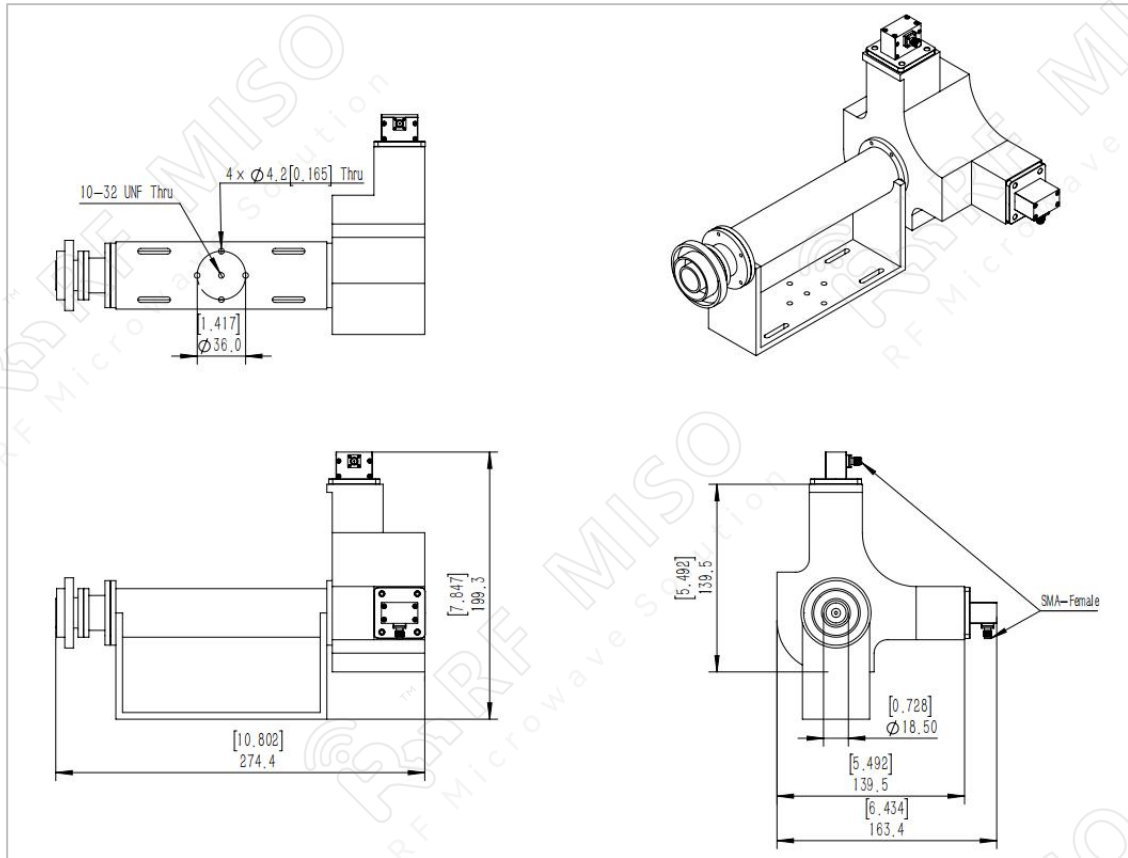
| RM-DCGHA75-9 | | |
|-----------------------|-------------------|------|
| Parameters | Specification | Unit |
| Frequency Range | 10.3-15 | GHz |
| Gain | 9 Typ. | dBi |
| VSWR | 1.5 Typ. | |
| Polarization | Dual Circular | |
| Cross Polarization | 25 Typ. | dB |
| AR | 2 Typ. | dB |
| 3dB Beamwidth,E-Plane | 62.33~81.21 | deg |
| 3dB Beamwidth,H-Plane | 62.17~80.91 | deg |
| Connector | SMA-Female | |
| Waveguide | WR75 | |
| Material | Al | |
| Finishing | Paint | |
| Size(L*W*H) | 274.4*163.4*139.5 | mm |
| Weight | 2.016 | Kg |
| Power Handling, CW | 50 | W |
| Power Handling, Peak | 3000 | W |

Dual Circular Polarization Corrugated Horn Antenna
9dBi Typ. Gain, 10.3-15GHz Frequency Range

Corrugated Horn Antenna Data Sheet

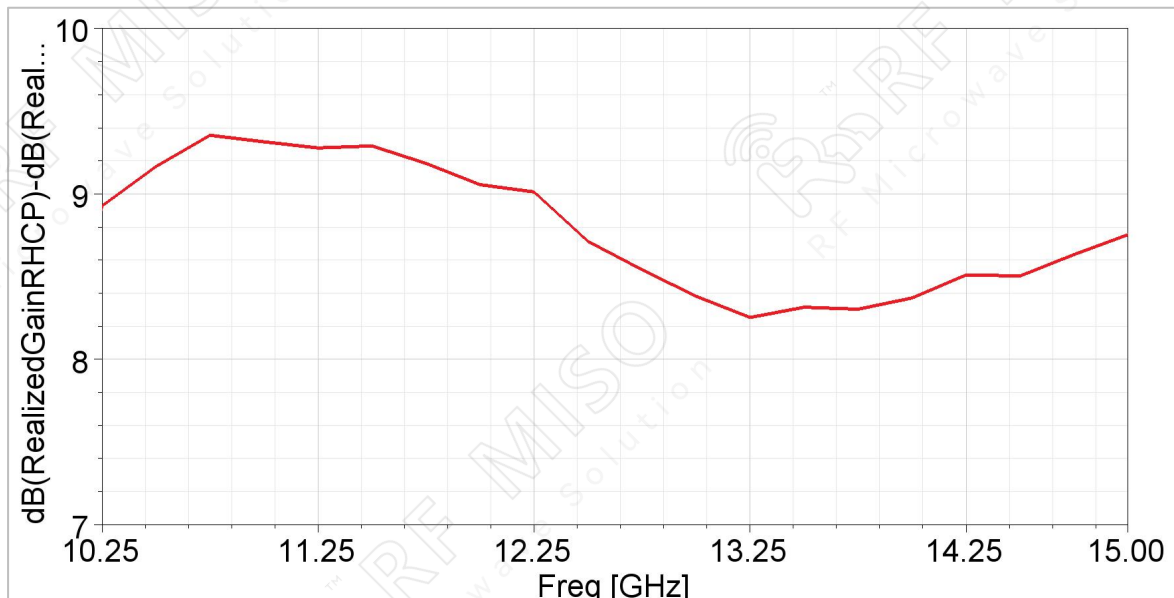
RM-DCGHA75-9

Outline Drawing



Simulated Results

Gain

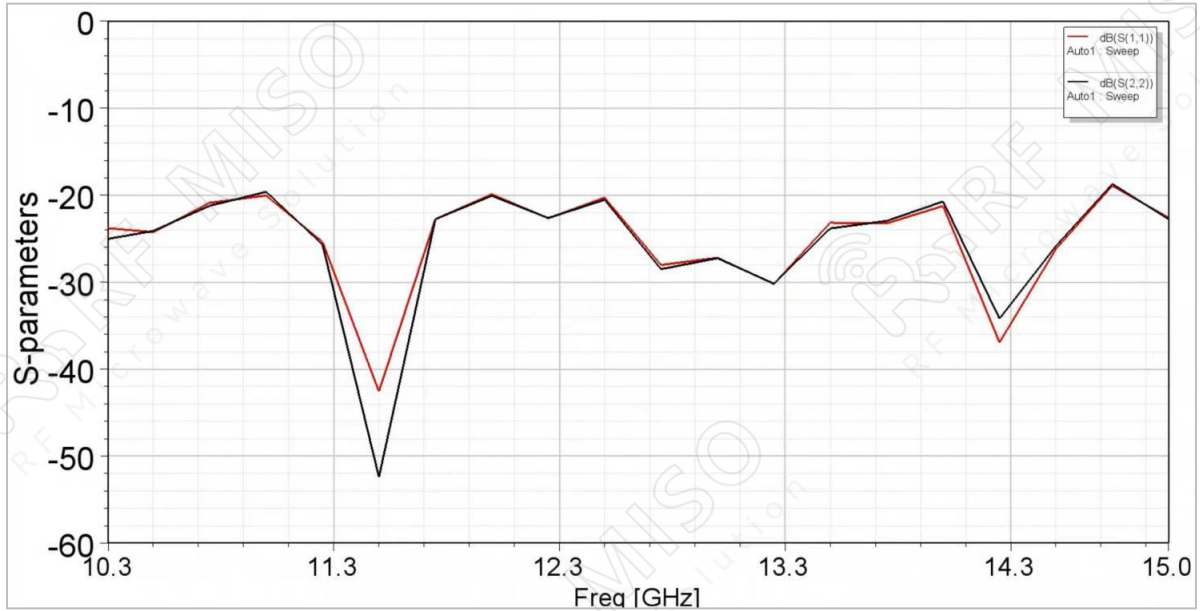


*Dual Circular Polarization Corrugated Horn Antenna
9dBi Typ. Gain, 10.3-15GHz Frequency Range*

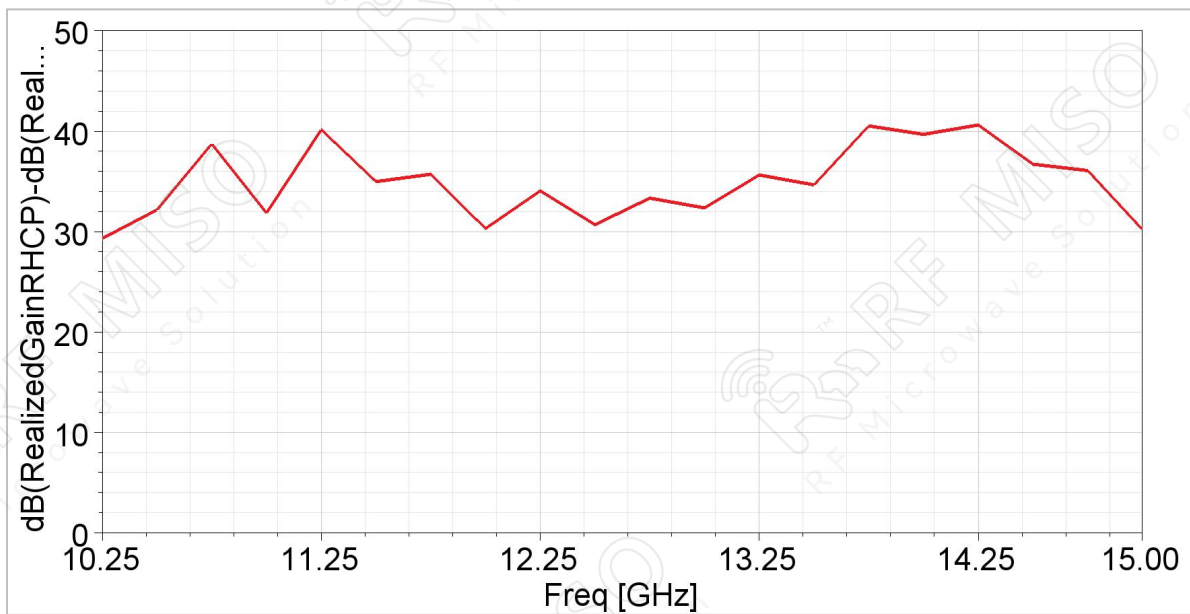
Corrugated Horn Antenna Data Sheet

RM-DCGHA75-9

Return Loss



Cross polarization

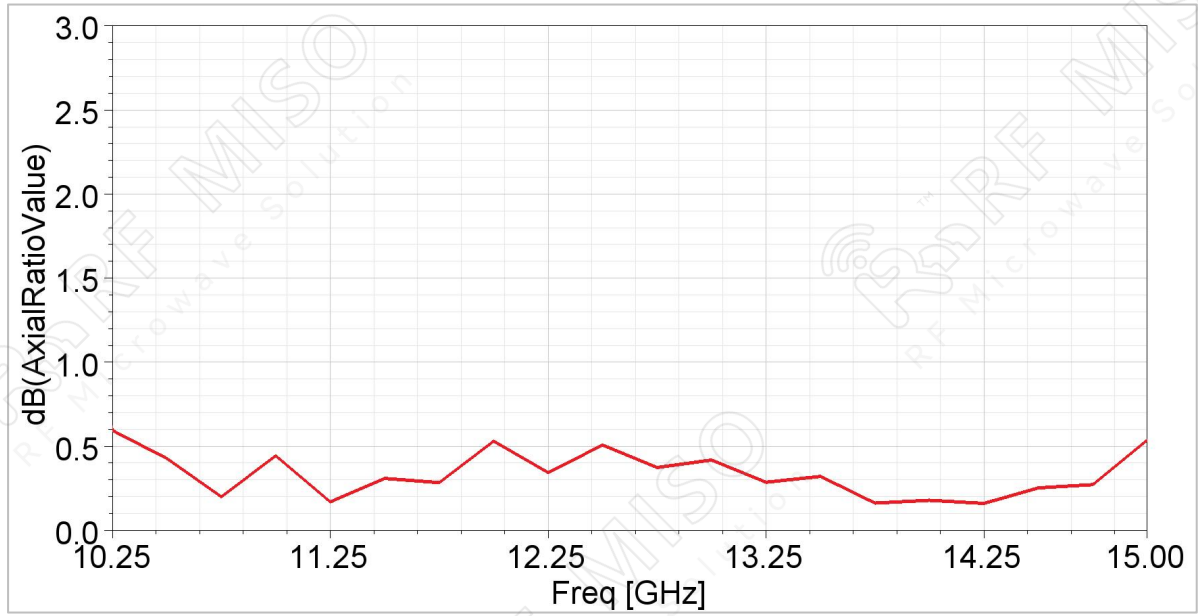


Dual Circular Polarization Corrugated Horn Antenna
9dBi Typ. Gain, 10.3-15GHz Frequency Range

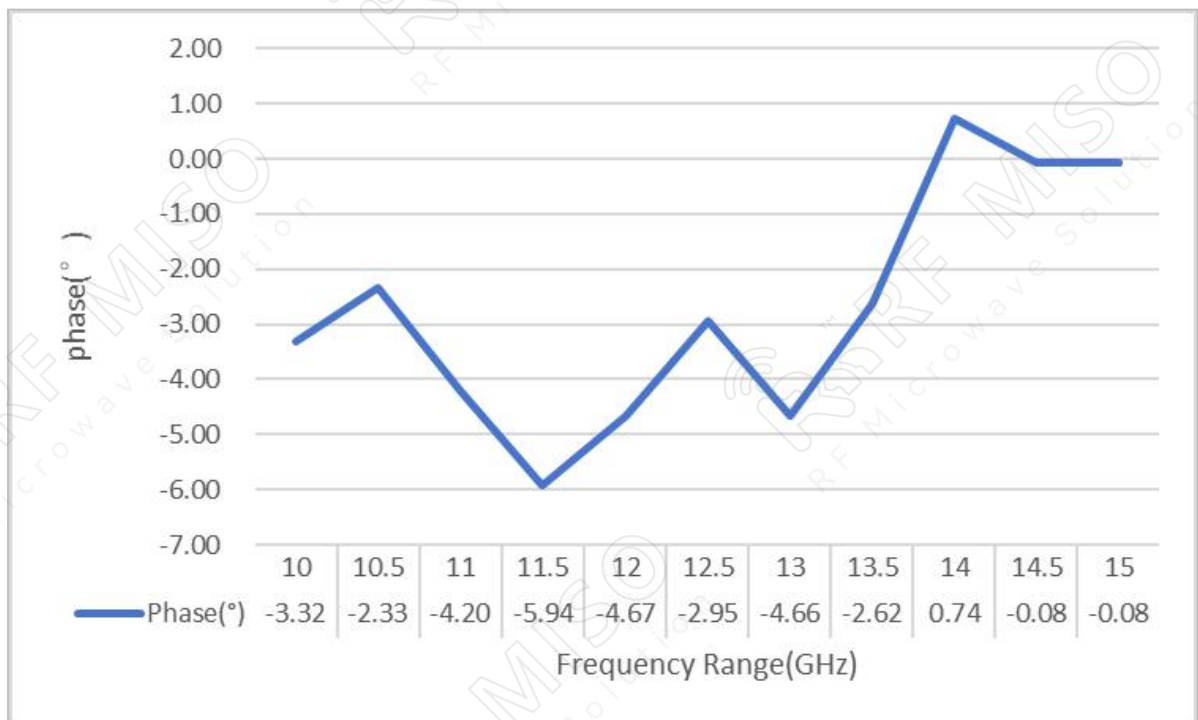
Corrugated Horn Antenna Data Sheet

RM-DCGHA75-9

AR



Phase

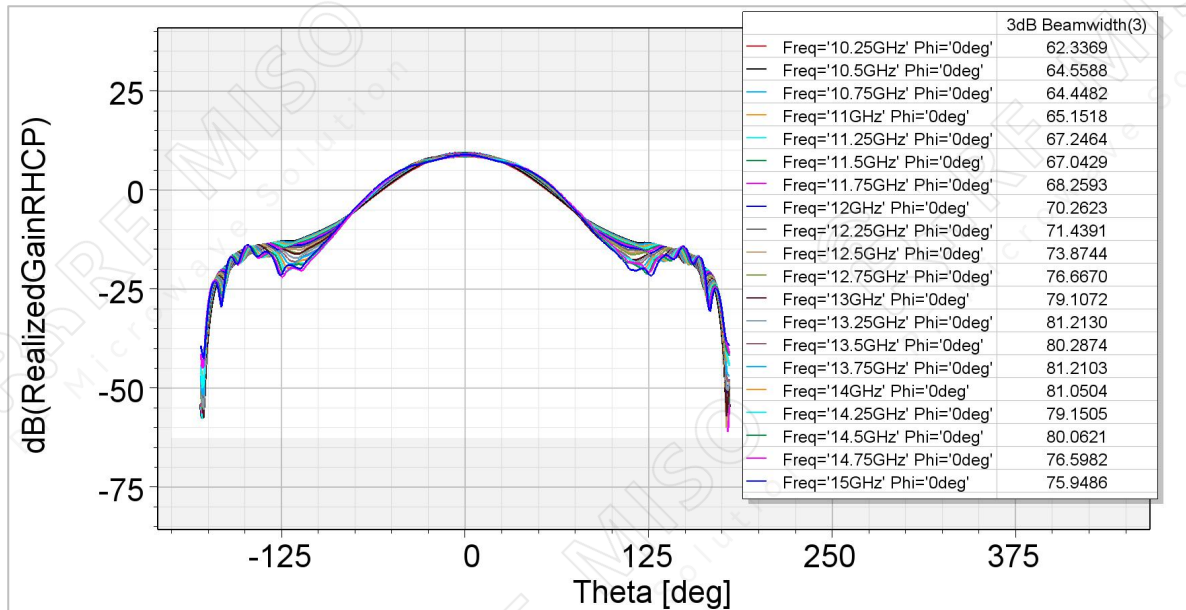


Dual Circular Polarization Corrugated Horn Antenna
9dBi Typ. Gain, 10.3-15GHz Frequency Range

Corrugated Horn Antenna Data Sheet

RM-DCGHA75-9

Pattern_E Plane



Pattern_H Plane

