



## Circularly Polarized Horn Antenna Data Sheet

**RM-CPHA1826-20**

### Features

- Low VSWR
- High Gain
- LHCP or RHCP
- Light Weight

### Descriptions

RF MISO's Model RM-CPHA1826-20 is a circularly polarized horn antenna that operates from 18 to 26.5GHz. The antenna offers a typical gain of 20 dBi and low VSWR <1.5, The antenna is equipped with a circular polarizer, a circular waveguide to circular waveguide Converter and a conical horn antenna. Antennas are widely used in antenna far-field testing, radio frequency radiation testing and other scenarios.

### Specifications

RM-CPHA1826-20		
Parameters	Specification	Unit
Frequency Range	18-26.5	GHz
Gain	20 Typ.	dBi
VSWR	<1.5	
AR	2 Typ.	dB
Cross Polarization	25 Typ.	dB
3dB Beamwidth	16	°
Polarization	LHCP or RHCP	
Interface	SMA-Female	
Material,Finishing	Al, Paint	
Average Power	50	W
Peak Power	100	W
Size (L*W*H)	262.8*62.2*69.8 (±5)	mm
Weight	0.377	kg

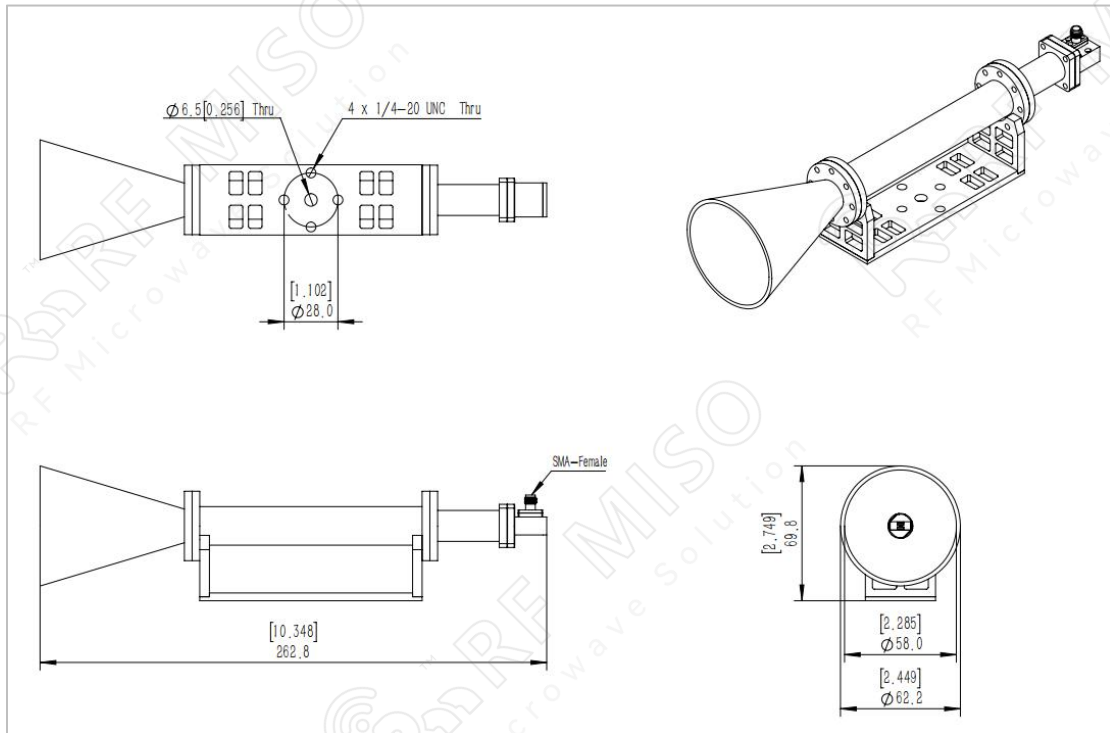
Circularly Polarized Horn Antenna 20dBi Typ. Gain,  
18-26.5 GHz Frequency Range



**Circularly Polarized Horn Antenna Data Sheet**

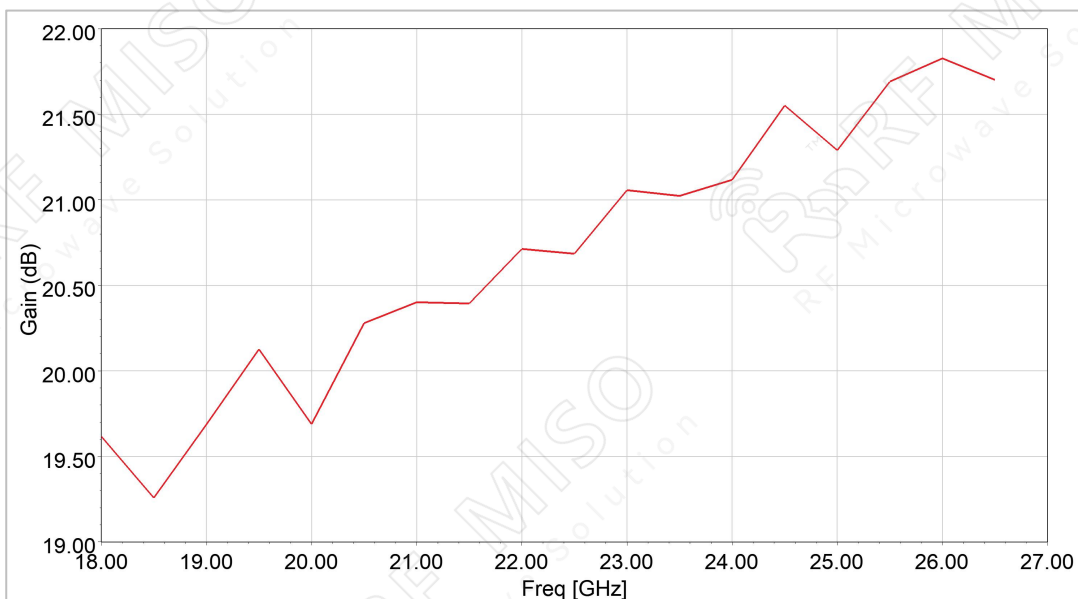
**RM-CPHA1826-20**

**Outline Drawing**



**Simulation Data**

**Gain**

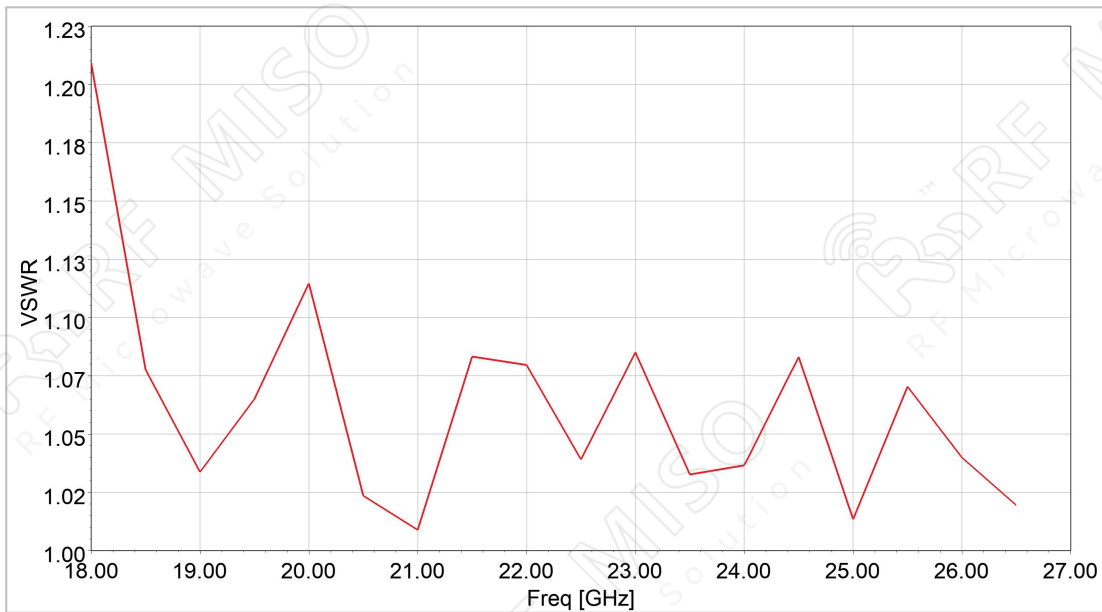




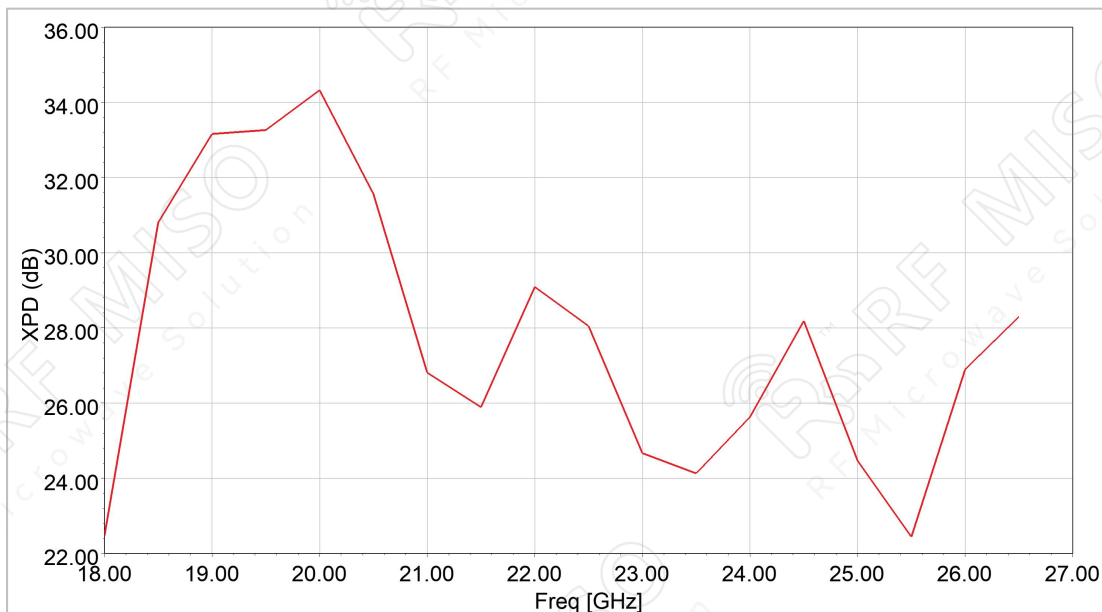
**Circularly Polarized Horn Antenna Data Sheet**

**RM-CPHA1826-20**

**VSWR**



**Cross Polarization**

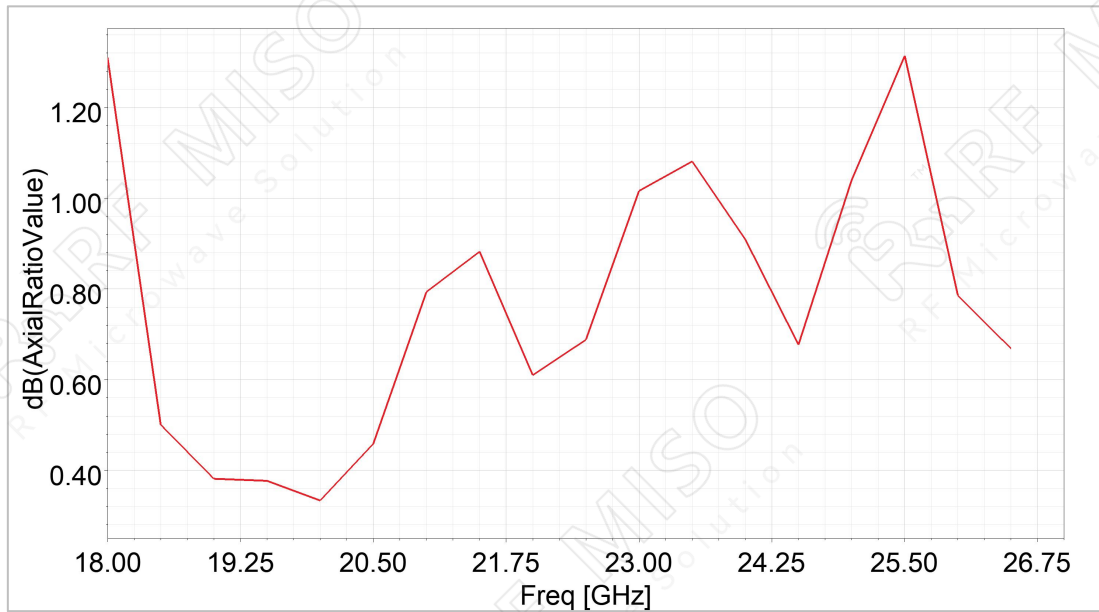




**Circularly Polarized Horn Antenna Data Sheet**

**RM-CPHA1826-20**

**AR**



**3dB Beamwidth**

