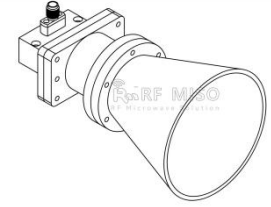


Conical Horn Antenna  
8-12 GHz Frequency Range, 15 dBi Typ. Gain



## Conical Horn Antenna Data Sheet

**RM-CHA90-15**

### Features

- Low VSWR
- Small Size
- Broadband Operation
- Light weight

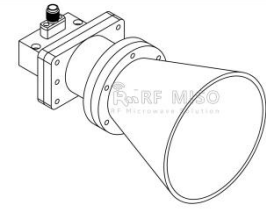
### Descriptions

RF MISO's **Model RM-CHA90-15** is a conical horn antenna that operates from 8 to 12GHz, The antenna offers 15 dBi typical gain. The antenna VSWR is 1.3:1 typical. It can be widely used in EMI detection, orientation, reconnaissance, antenna gain and pattern measurement and other application fields.

### Specifications

RM-CHA90-15		
Parameters	Typical	Units
Frequency Range	8-12	GHz
Gain	15 Typ.	dBi
VSWR	1.3 Typ.	
3db Beamwidth	E-Plane:27.87 Typ. H-Plane:32.62 Typ.	dB
Cross Polarization	55 Typ.	dB
Connector	SMA-Female	
Waveguide	WR90	
Finishing	Paint	
Size (L*W*H)	144.6*Ø68.2(±5)	mm
Weight with holder	0.212	kg

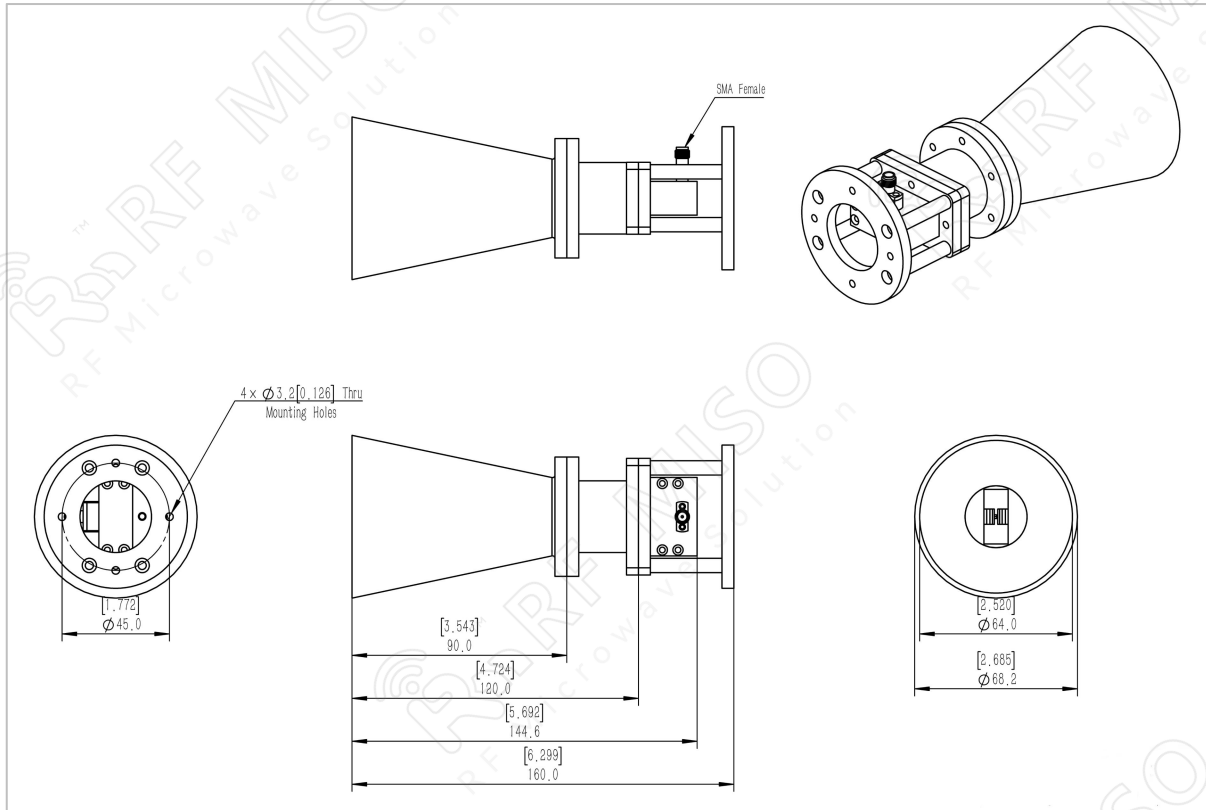
Conical Horn Antenna  
8-12 GHz Frequency Range, 15 dBi Typ. Gain

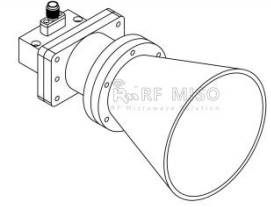


**Conical Horn Antenna Data Sheet**

**RM-CHA90-15**

**Outline Drawing**





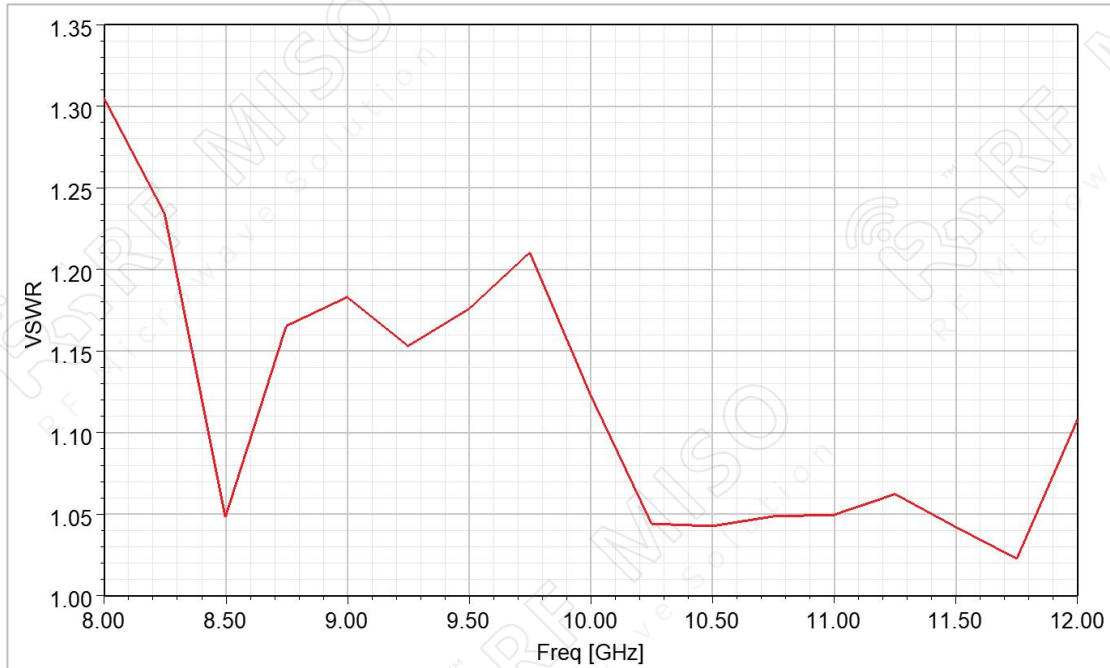
Conical Horn Antenna  
8-12 GHz Frequency Range, 15 dBi Typ. Gain

**Conical Horn Antenna Data Sheet**

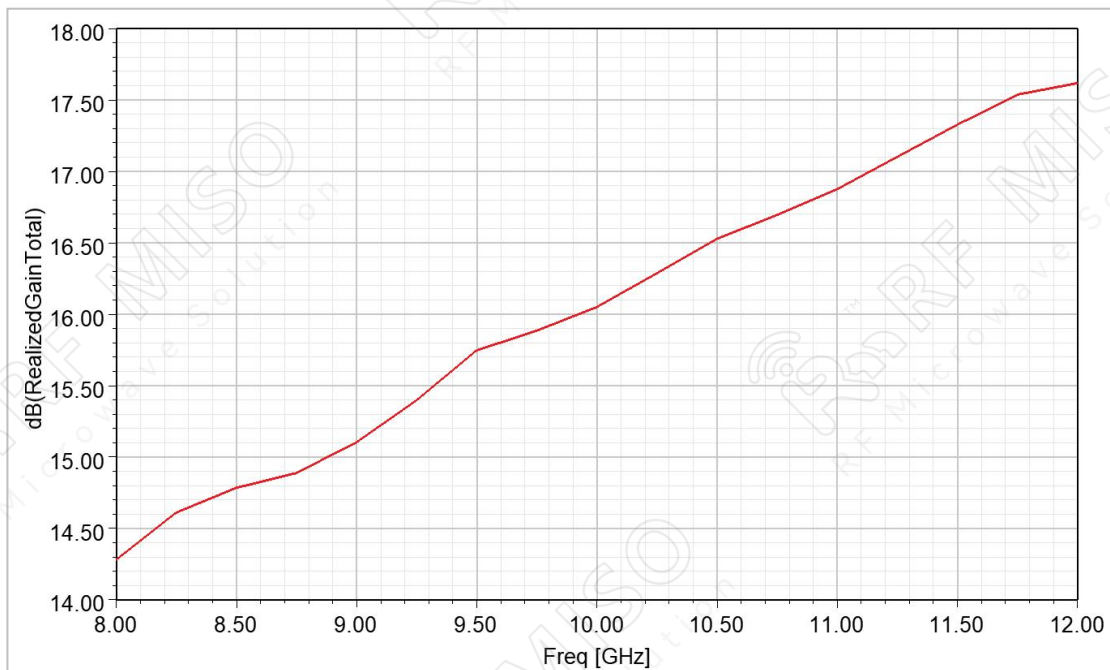
**RM-CHA90-15**

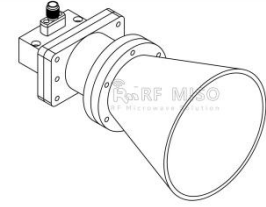
**Simulated Results**

**VSWR**



**Gain**



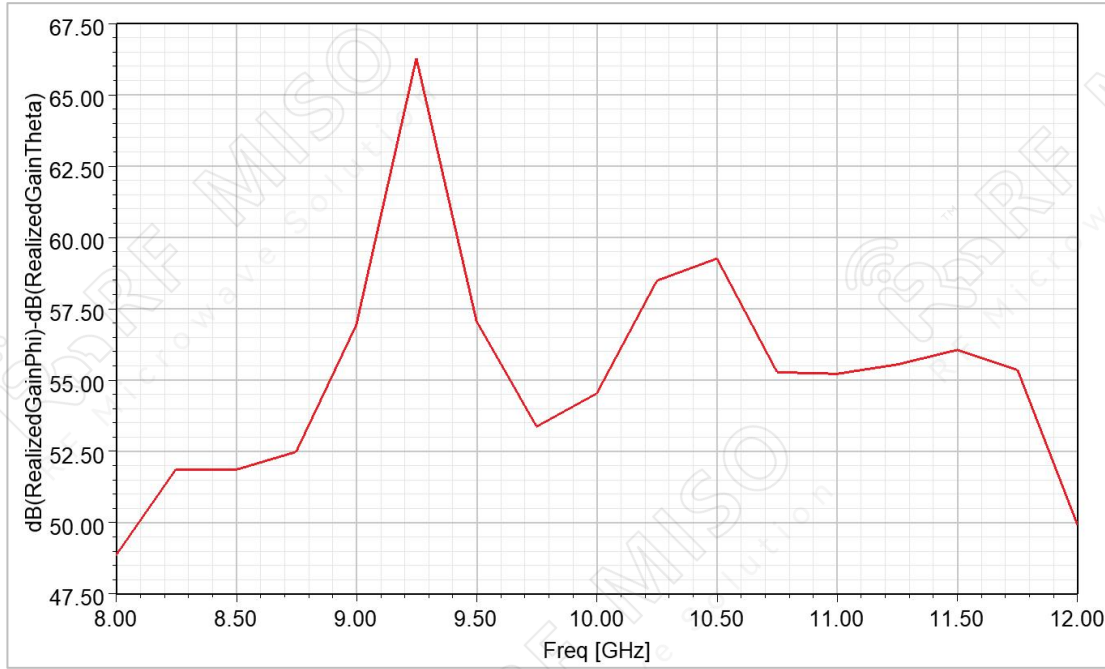


Conical Horn Antenna  
8-12 GHz Frequency Range, 15 dBi Typ. Gain

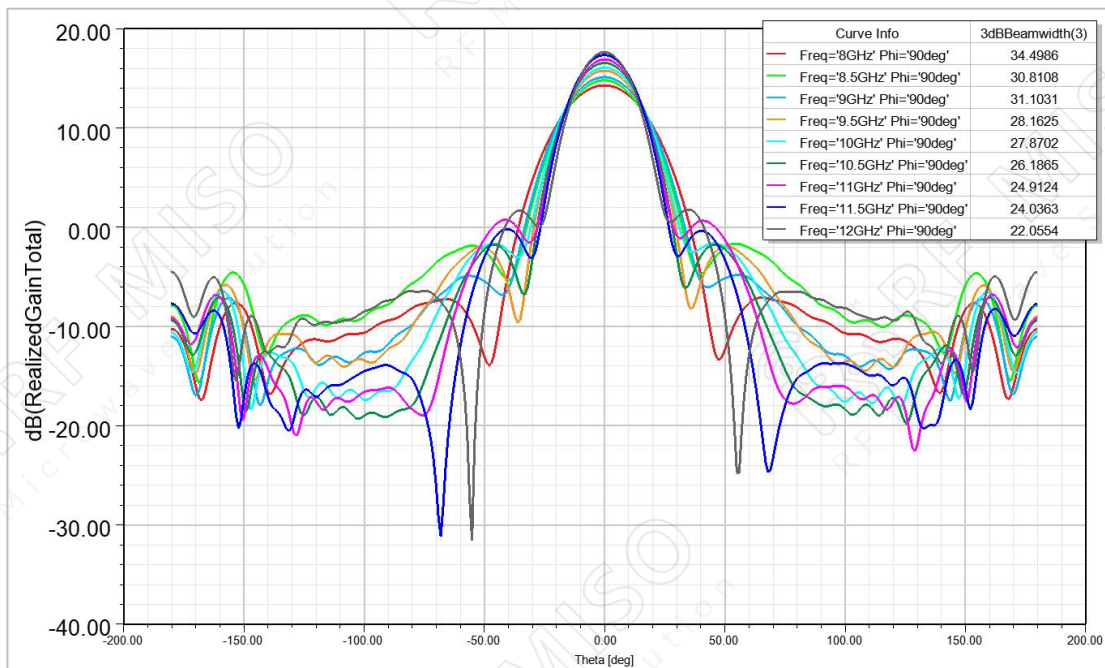
**Conical Horn Antenna Data Sheet**

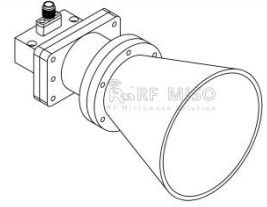
**RM-CHA90-15**

**Cross Polarization**



**Pattern\_E Plane**





Conical Horn Antenna  
8-12 GHz Frequency Range, 15 dBi Typ. Gain

**Conical Horn Antenna Data Sheet**

**RM-CHA90-15**

**Pattern\_H Plane**

