



Conical Horn Antenna
4-6 GHz Frequency Range, 15 dBi Typ. Gain

Conical Horn Antenna Data Sheet

RM-CHA159-15

Features

- Low VSWR
- Small Size
- Broadband Operation
- Light weight

Descriptions

RF MISO's **Model RM-CHA159-15** is a conical horn antenna that operates from 4 to 6GHz, The antenna offers 15 dBi typical gain. The antenna VSWR is 1.3:1 typical. It can be widely used in EMI detection, orientation, reconnaissance, antenna gain and pattern measurement and other application fields.

Specifications

RM-CHA159-15		
Parameters	Typical	Units
Frequency Range	4-6	GHz
Gain	15 Typ.	dBi
VSWR	1.3 Typ.	
3db Beamwidth	E-Plane:32.94 Typ. H-Plane:38.75 Typ.	dB
Cross Polarization	55 Typ.	dB
Connector	SMA-Female	
Waveguide	WR159	
Finishing	Paint	
Size (L*W*H)	294*Ø120(±5)	mm
Weight with holder	2.107	kg

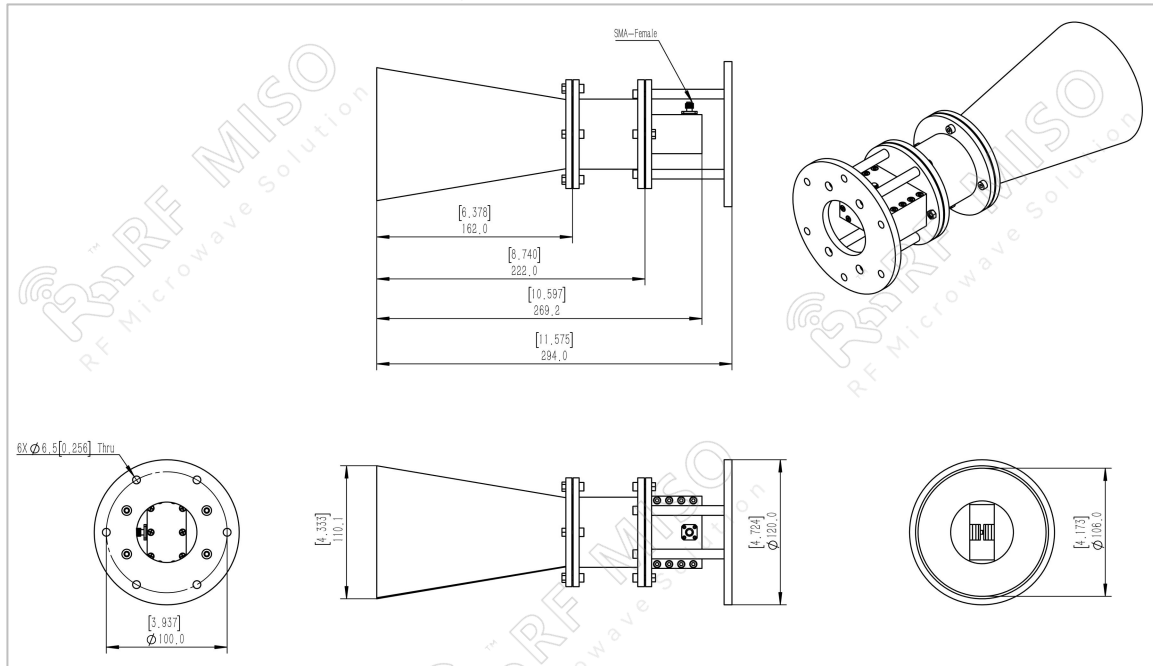


Conical Horn Antenna
4-6 GHz Frequency Range, 15 dBi Typ. Gain

Conical Horn Antenna Data Sheet

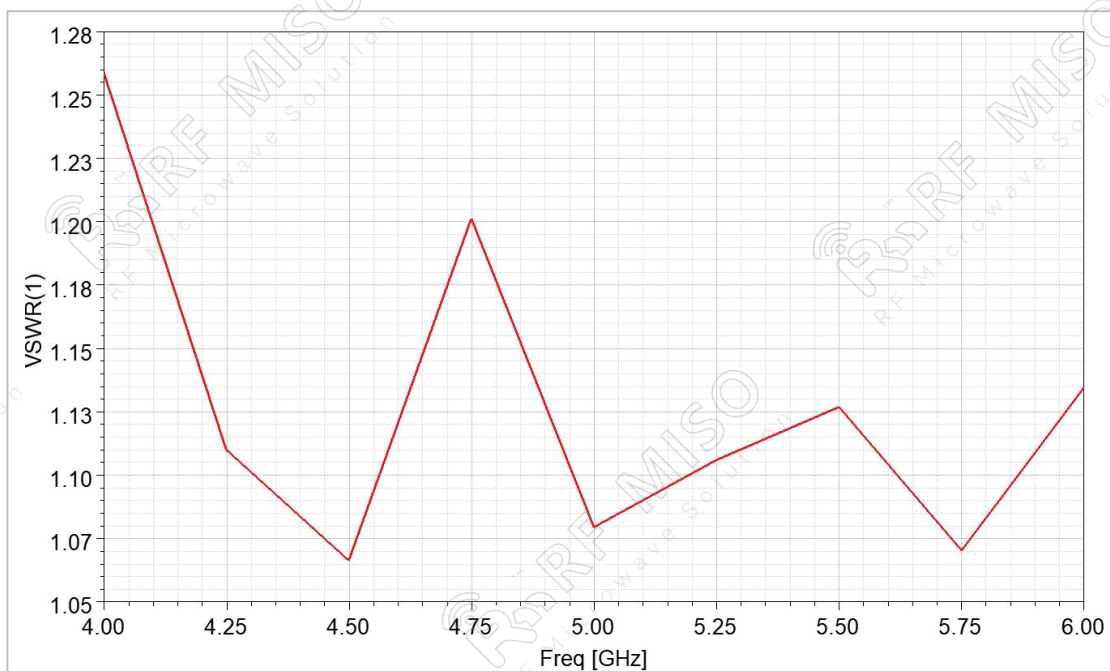
RM-CHA159-15

Outline Drawing



Simulated Results

VSWR



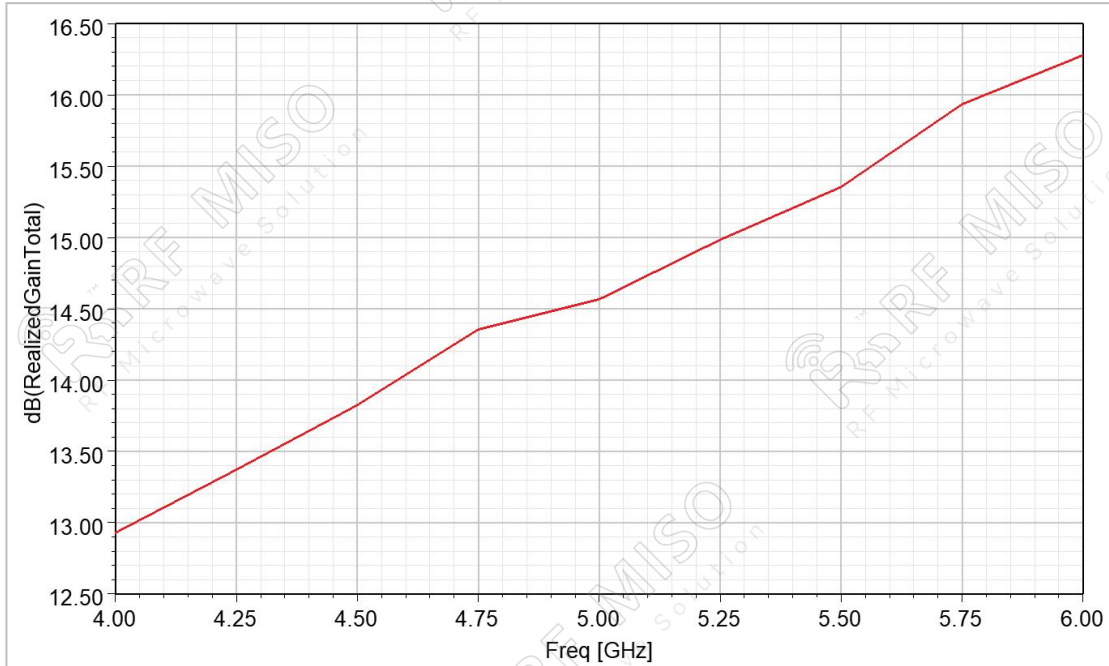


Conical Horn Antenna
4-6 GHz Frequency Range, 15 dBi Typ. Gain

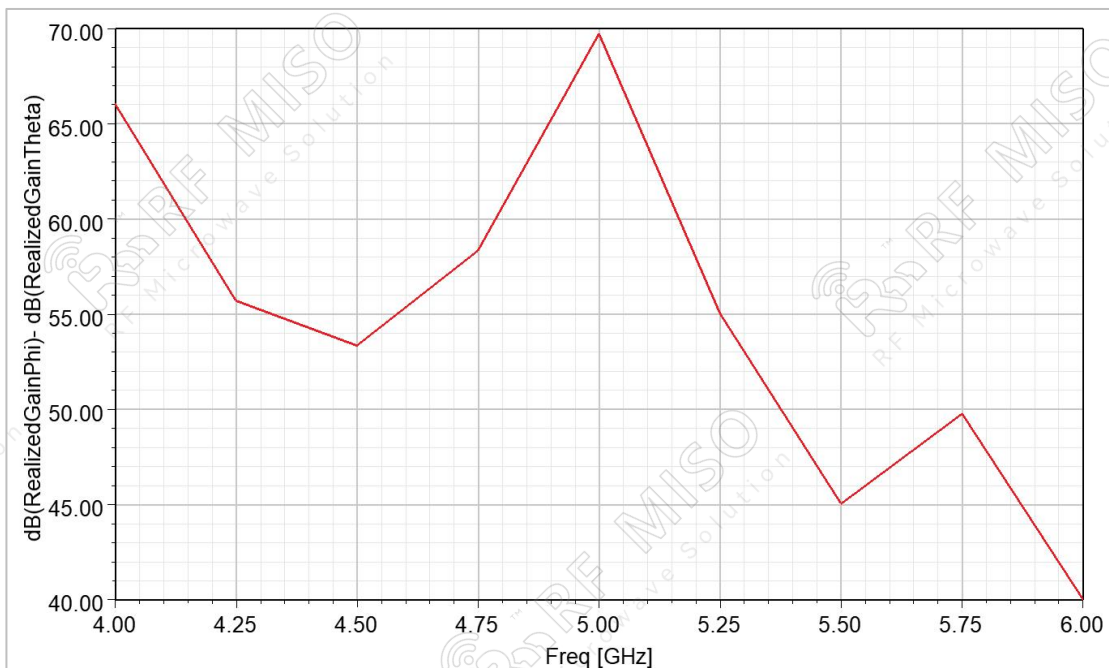
Conical Horn Antenna Data Sheet

RM-CHA159-15

Gain



Cross



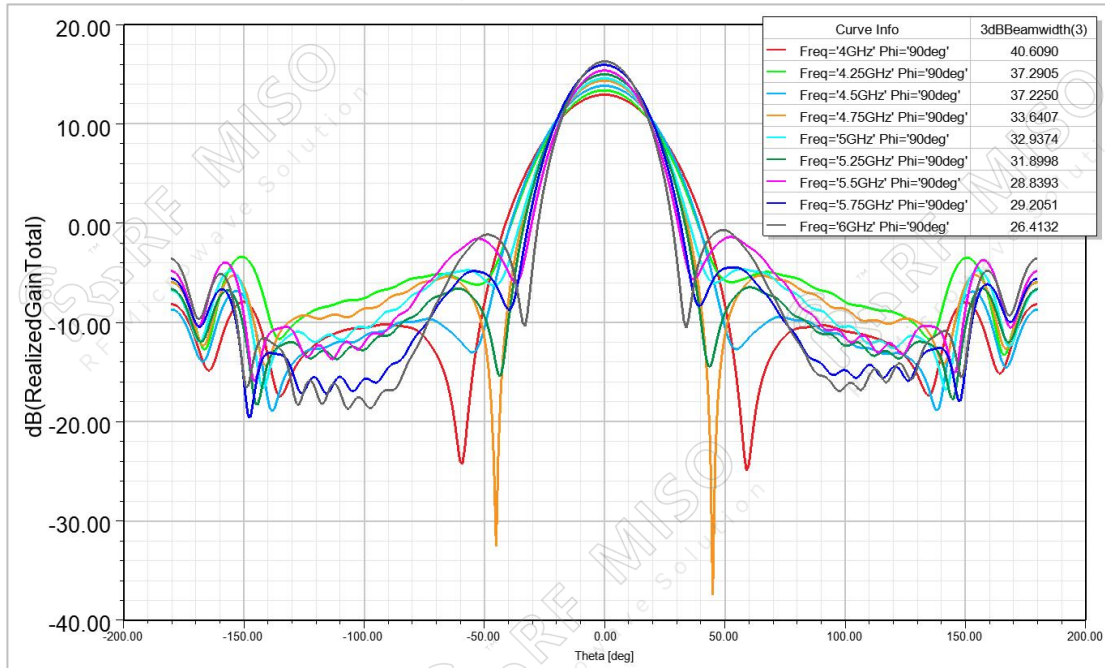


Conical Horn Antenna
4-6 GHz Frequency Range, 15 dBi Typ. Gain

Conical Horn Antenna Data Sheet

RM-CHA159-15

Pattern_E Plane



Pattern_H Plane

