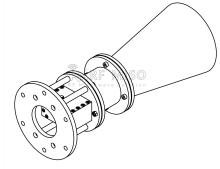


Conical Horn Antenna  
4-6 GHz Frequency Range, 15 dBi Typ. Gain



## Conical Horn Antenna Data Sheet

**RM-CHA159-15**

### Features

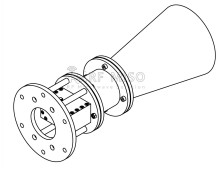
- Low VSWR
- Small Size
- Broadband Operation
- Light weight

### Descriptions

RF MISO's **Model RM-CHA159-15** is a conical horn antenna that operates from 4 to 6GHz, The antenna offers 15 dBi typical gain. The antenna VSWR is 1.3:1 typical. It can be widely used in EMI detection, orientation, reconnaissance, antenna gain and pattern measurement and other application fields.

### Specifications

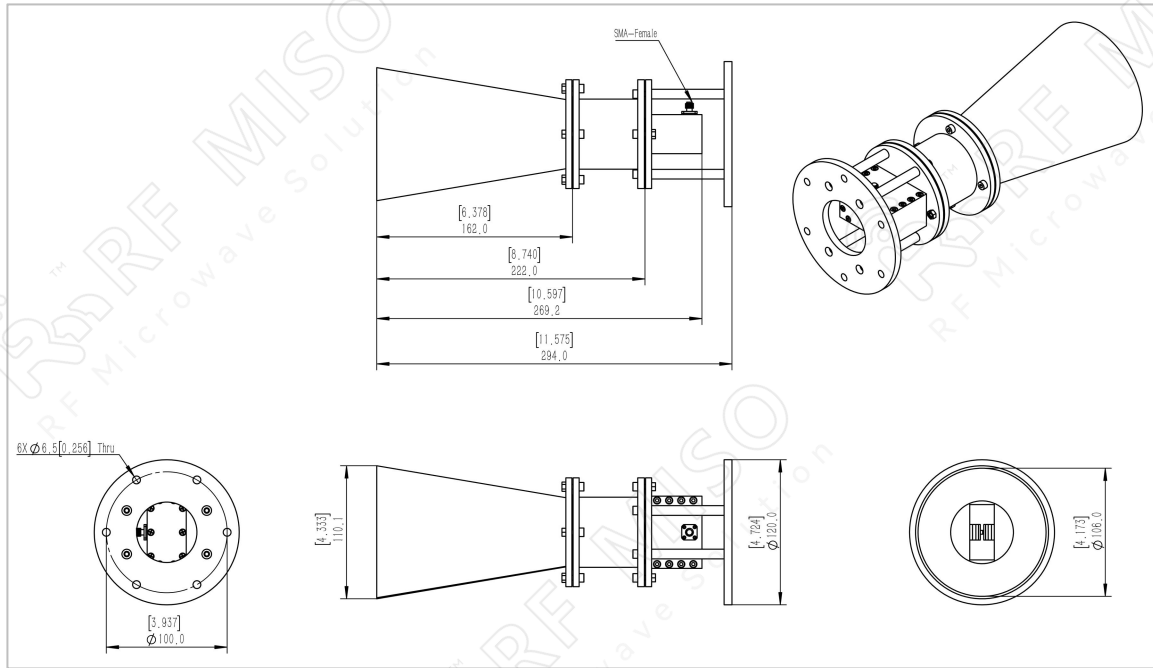
RM-CHA159-15		
Parameters	Typical	Units
Frequency Range	4-6	GHz
Gain	15 Typ.	dBi
VSWR	1.3 Typ.	
3db Beamwidth	E-Plane:32.94 Typ. H-Plane:38.75 Typ.	dB
Cross Polarization	55 Typ.	dB
Connector	SMA-Female	
Waveguide	WR159	
Finishing	Paint	
Size (L*W*H)	294*Ø120(±5)	mm
Weight with holder	2.107	kg



**Conical Horn Antenna Data Sheet**

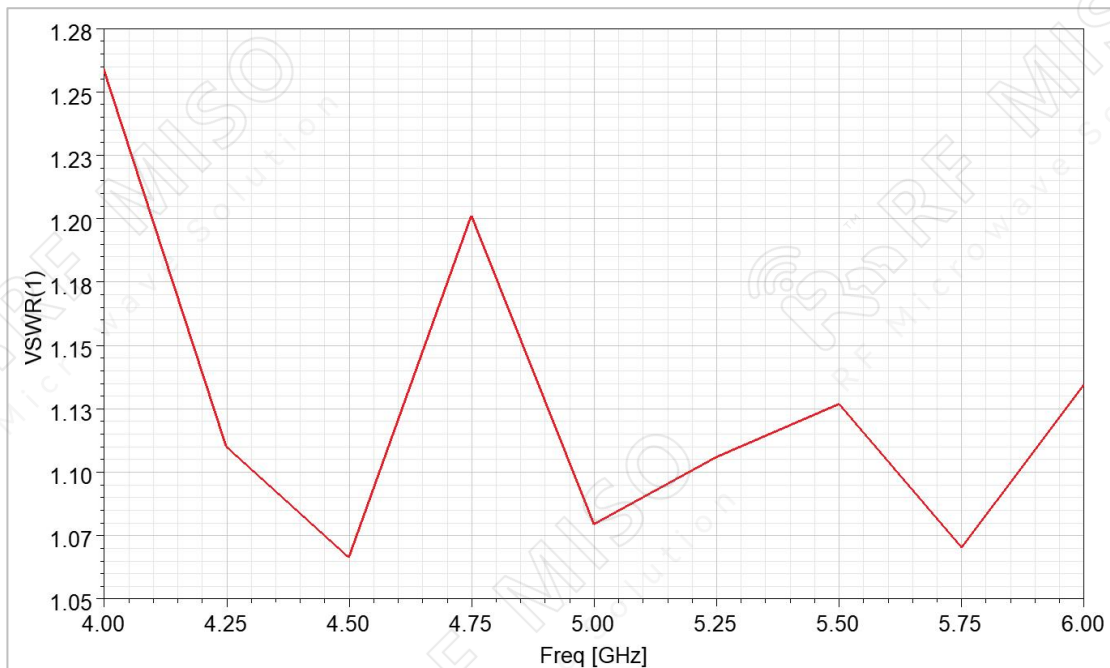
**RM-CHA159-15**

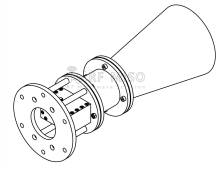
**Outline Drawing**



**Simulated Results**

**VSWR**

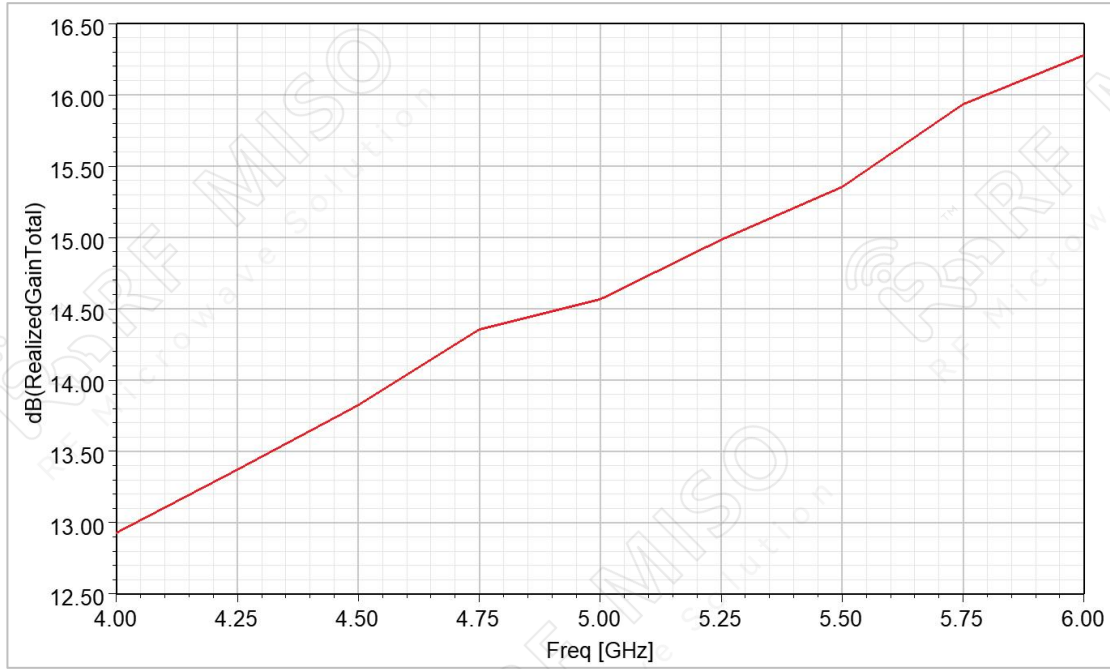




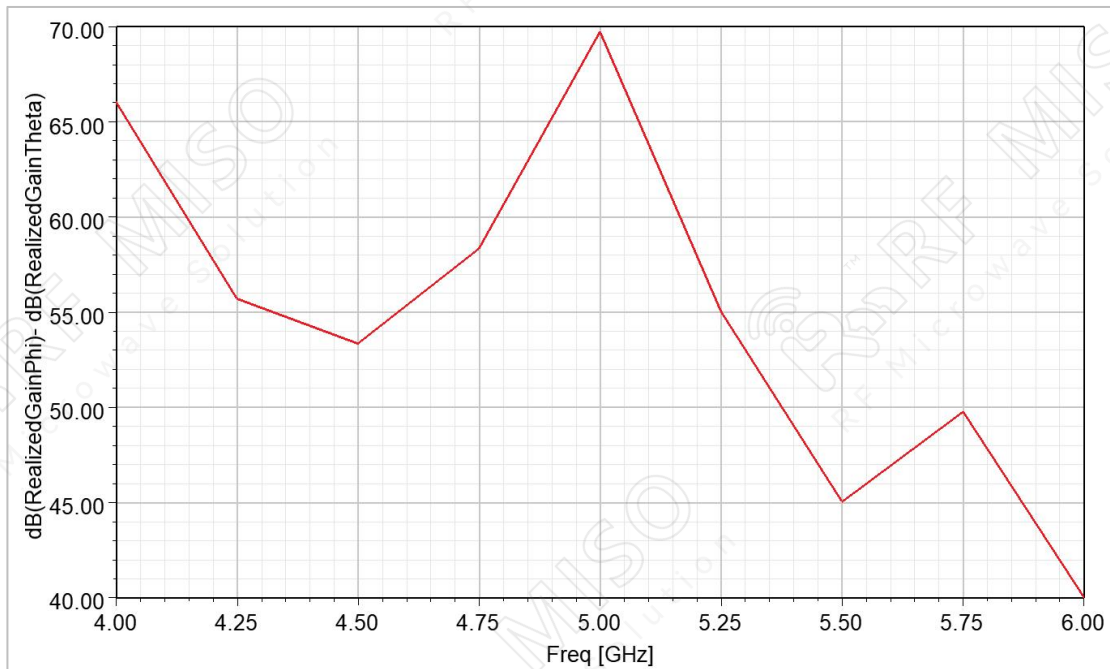
**Conical Horn Antenna Data Sheet**

**RM-CHA159-15**

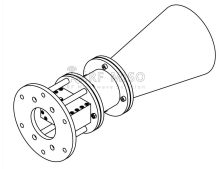
**Gain**



**Cross Polarization**



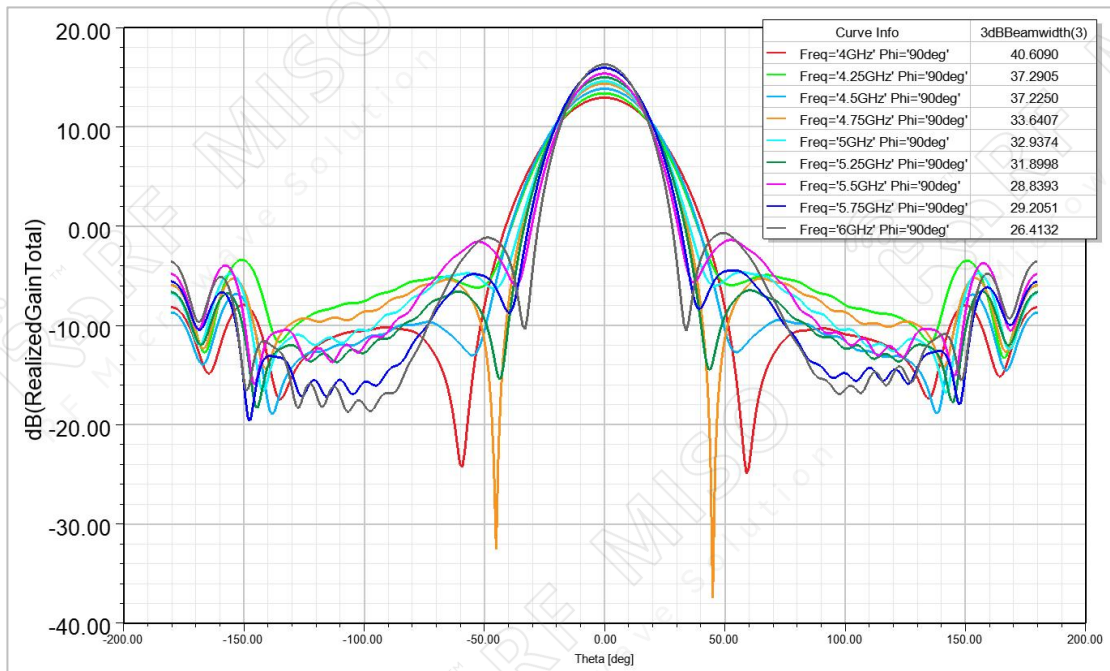
Conical Horn Antenna  
4-6 GHz Frequency Range, 15 dBi Typ. Gain



**Conical Horn Antenna Data Sheet**

**RM-CHA159-15**

**Pattern\_E Plane**



**Pattern\_H Plane**

